

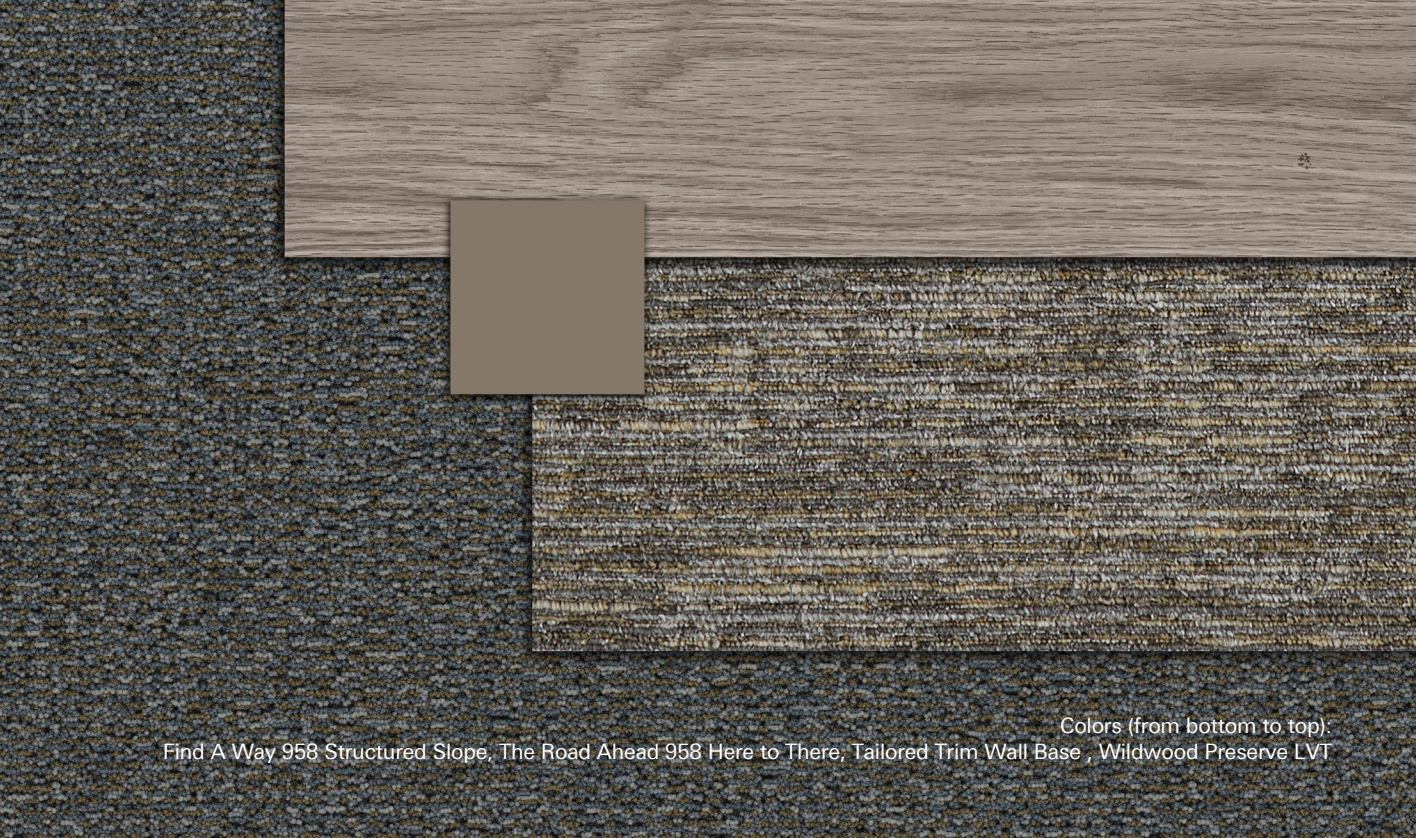
Find A Way Collection
Restful Trek, Meandering Way, Structured Slope







Structured Slope 937, Meandering Trail 937
Cover: Restful Trek 935



Colors (from bottom to top):
Find A Way 958 Structured Slope, The Road Ahead 958 Here to There, Tailored Trim Wall Base , Wildwood Preserve LVT

Find A Way Collection

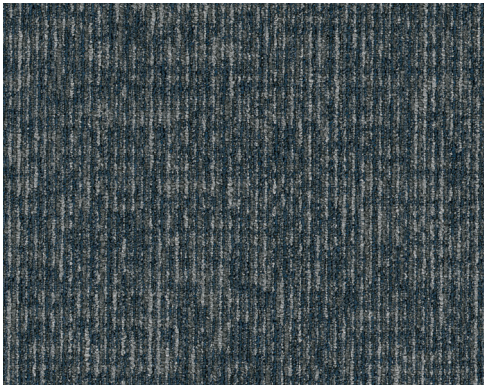
Dive into color, inspiration, and calming design with Aladdin Commercial’s Find A Way Collection. Find A Way features 3 styles available in 24” x 24” tiles (Restful Trek and Meandering Trail) and a coordinating broadloom (Structured Slope). All 8 colors offered in this collection have been intentionally and beautifully updated to elevate and freshen your floor environment. Find A Way is constructed with our sustainable Colorstrand SD fiber and backed by UltraSet Matrix and Weldlok® solutions.

Features:

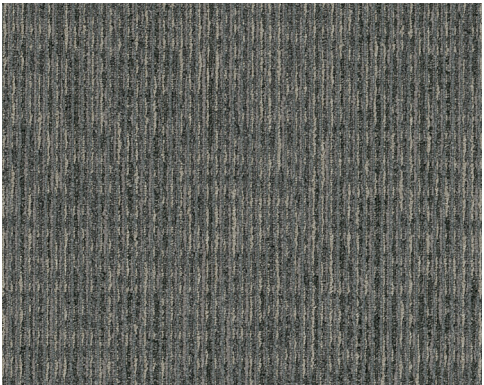
- 8 updated colors in 3 modern and organic styles
- 24” x 24” tiles (Restful Trek and Meandering Trail) and broadloom (Structured Slope)
- Constructed with ColorStrand SD fiber, UltraSet Matrix backing, and Weldlok® backing
- Green Label Plus Certified
- Intentionally designed to coordinate with The Road Ahead, Primary Effects, and Monumental Series Collections
- Design flexibility with other Aladdin Commercial carpet, hard surface, and accessories collections



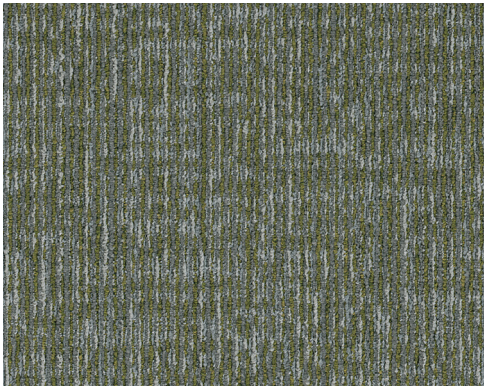
Colorways for Find A Way Collection



Cinder 989



Tundra 935



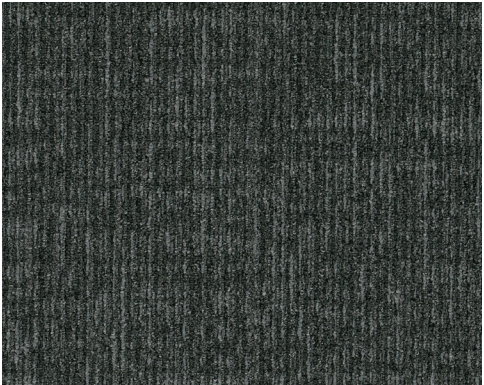
Granite 979



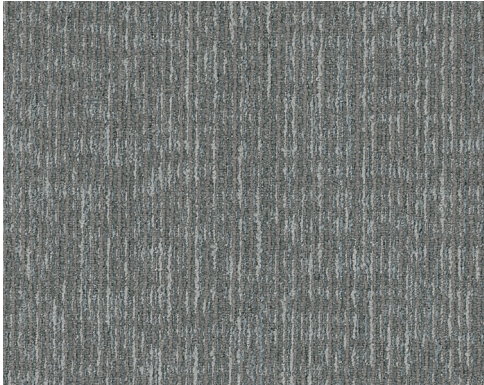
Birch 828



Teak 958



Sage 626



Concrete 937



Bay 593

All colorways are available in all styles.

Specifications

CARPET TILE ☐

Brand.....	Aladdin Commercial
Style Name / Number	Meandering Trail / 2B219
Construction	Tufted
Surface Appearance	Textured Pattern Loop
Gauge.....	1/12 (47.00 rows per 10cm)
Density.....	7,116
Dye Method.....	100% Solution Dyed
Fiber Type	ColorStrand® SD Nylon
Stain Release Technology	Mohawk Protection Plus Stain
Soil Release Technology.....	Mohawk Protection Plus Soil
Primary Backing	Non Woven Synthetic
Secondary Backing	UltraSet® Matrix
Indoor Air Quality	Green Label Plus Certified # 1171
NSF 140	Gold
Size.....	24" x 24" (.6096 m x .6096 m)
Installation Method	Quarter Turn / Monolithic / Brick Ashlar/ Vertical Ashlar/ Multi-Directional
Flammability	ASTM E 648 Class 1 (Glue Down)
Smoke Density	ASTM E 662 Less than 450
Static Propensity	AATCC-134 Under 3.5 KV
Warranties.....	Lifetime Limited Wear Warranty Lifetime Limited Static Protection Warranty Lifetime Limited Edge Ravel, Zippering, Delamination, and Dimensional Stability Warranty Lifetime Limited Colorfastness to Light Warranty 10 Year Limited Stain Resistance Warranty 10 Year Limited Colorfastness to Atmospheric Contaminants

CARPET TILE ☐

Brand.....	Aladdin Commercial
Style Name / Number	Restful Trek / 2B218
Construction	Tufted
Surface Appearance	Textured Pattern Loop
Gauge.....	1/12 (47.00 rows per 10cm)
Density.....	8,383
Dye Method.....	100% Solution Dyed
Fiber Type	ColorStrand® SD Nylon
Stain Release Technology	Mohawk Protection Plus Stain
Soil Release Technology.....	Mohawk Protection Plus Soil
Primary Backing	Non Woven Synthetic
Secondary Backing	UltraSet® Matrix
Indoor Air Quality	Green Label Plus Certified # 1171
NSF 140	Gold
Size.....	24" x 24" (.6096 m x .6096 m)
Installation Method	Quarter Turn / Monolithic / Brick Ashlar/ Vertical Ashlar/ Multi-Directional
Flammability	ASTM E 648 Class 1 (Glue Down)
Smoke Density	ASTM E 662 Less than 450
Static Propensity	AATCC-134 Under 3.5 KV
Warranties.....	Lifetime Limited Wear Warranty Lifetime Limited Static Protection Warranty Lifetime Limited Edge Ravel, Zippering, Delamination, and Dimensional Stability Warranty Lifetime Limited Colorfastness to Light Warranty 10 Year Limited Stain Resistance Warranty 10 Year Limited Colorfastness to Atmospheric Contaminants

CARPET TILE ☐

Brand.....	Aladdin Commercial
Style Name / Number	Structured Slope / 2B217
Construction	Tufted
Surface Appearance	Textured Pattern Loop
Gauge.....	1/12 (47.00 rows per 10cm)
Density.....	6,680
Dye Method.....	100% Solution Dyed
Fiber Type	ColorStrand® SD Nylon
Stain Release Technology	Mohawk Protection Plus Stain
Soil Release Technology.....	Mohawk Protection Plus Soil
Primary Backing	Weldlok®
Indoor Air Quality	Green Label Plus Certified # 8216
NSF 140	Gold
Size.....	12' width (3.66 m)
Flammability	ASTM E 648 Class 1 (Glue Down)
Smoke Density	ASTM E 662 Less than 450
Static Propensity	AATCC-134 Under 3.5 KV
Warranties.....	Lifetime Limited Wear Warranty Lifetime Limited Static Protection Warranty Lifetime Limited Colorfastness to Light Warranty 10 Year Limited Stain Resistance Warranty 10 Year Limited Colorfastness to Atmospheric Contaminants

Aladdin[™]
COMMERCIAL

Mohawk Industries, Inc. warrants its adhesives for the life of the original installation only when a Mohawk Industries style (product) is installed. Mohawk's floor preparation procedures must be followed to ensure that the substrate has been prepared properly. Failure to use Mohawk Industries adhesives or to follow Mohawk's floor preparation procedures will void all lifetime adhesive warranties. Please contact your local Sales Representative for installation guidelines.

Mohawk is providing this architect folder for the purpose of promoting our commercial business. Color may vary from dye lot to dye lot. Substitution of material may be made due to improved technology, supply limitations or other factors. The performance of this product is not affected by such variations. We recommend the use of chair pads on all commercial installations.

For current and complete specifications please call tech support at 888-387-9881 or visit www.AladdinCommercial.com I 800.233.4490



Up to 2,000 sq. yds. available within 10 business days or less



