

Familiar Frontier





932 Shelburne
Cover: 960 Gainsboro



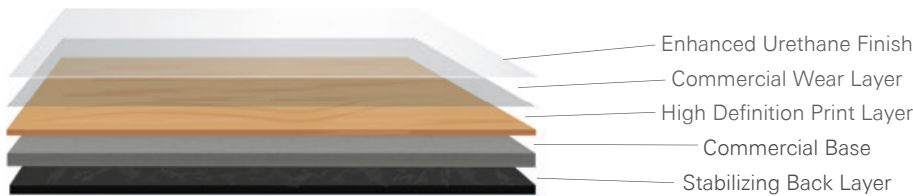


Familiar Frontier Collection

Familiar Frontier collection from Aladdin Commercial offers a portfolio of LVT products suited for any commercial interior. Available in six different construction types including peel & stick, glue-down, and clic; Familiar Frontier provides a wide variety of solutions for commercial spaces. Familiar Frontier is available in two plank sizes, with two 12" x 24" stone visuals and twelve 6" x 48" wood looks.

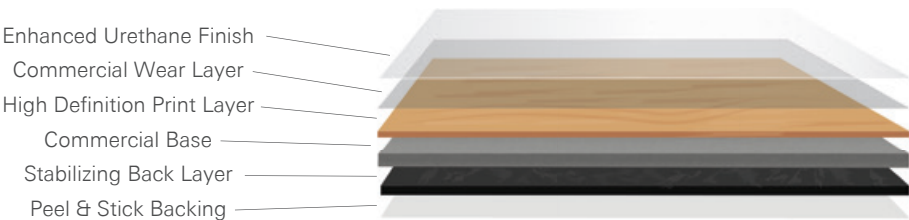
Glue Down Features & Benefits (AH078 / AH080):

- 2 mm overall gauge
- 6 mil or 12 mil commercial wear layer
- 6" x 48" and 12" x 24" sizes
- Enhanced Urethane Finish
- FloorScore Certified
- Limited 5 Year Light Commercial Warranty (6 mil)
- Limited 10 Year Light Commercial Warranty (12 mil)
- Limited 25 Year Residential Warranty



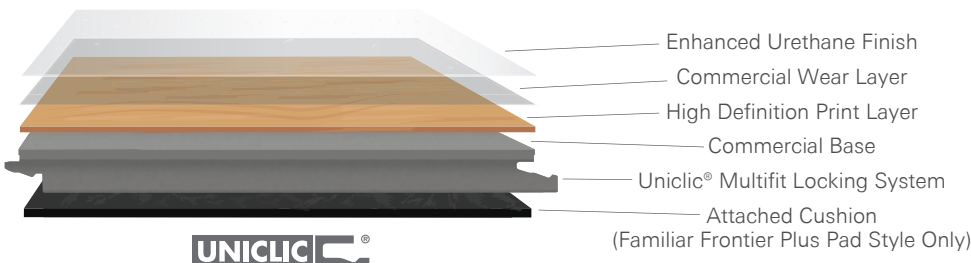
Peel & Stick Features & Benefits (AH079 / AH081):

- 2 mm overall gauge
- 6 mil or 12 mil commercial wear layer
- 6" x 48" and 12" x 24" sizes
- Ease of Installation with peel & stick backing (no adhesive needed for installation)
- Enhanced Urethane Finish
- FloorScore Certified
- Limited 5 Year Light Commercial Warranty (6 mil)
- Limited 10 Year Light Commercial Warranty (12 mil)
- Limited 25 Year Residential Warranty



Clic Features & Benefits (AH082 / AH083):

- 3.2 mm overall gauge (without cushion)
- 3.7 mm overall gauge (with cushion)
- 12 mil commercial wear layer
- 6" x 48" and 12" x 24" sizes
- Ease of Installation with Uniclic® Multifit Locking System
- Enhanced Urethane Finish
- Available with attached pad, offering better acoustical performance and more comfort underfoot
- FloorScore Certified
- Limited 5 Year Light Commercial Warranty (6 mil)
- Limited 10 Year Light Commercial Warranty (12 mil)
- Limited 25 Year Residential Warranty



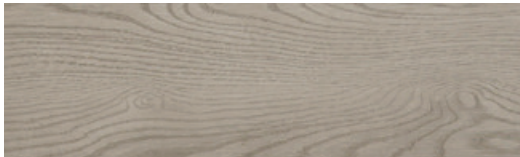
Familiar Frontier Color Options



2 Saddle Brown



12 Castlerock



16 Storm Cloud



72 Sienna



124 Anchor



167 Hazelnut



340 Cornsilk



440 Burlywood



910 Drumhill



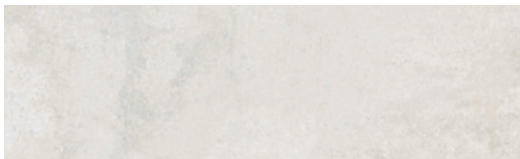
920 Parchment



932 Shelburne



983 Sepia



930 Linen



960 Gainsboro

Specifications

LVT	Brand	Aladdin Commercial
	Style Name / Number	Familiar Frontier / AH078
	Product Type	Luxury Vinyl Tile
	Wear Layer	6 mil
	Finish	Commercial Urethane Finish
	Colors Available	14
	Size	6" x 48" (Actual) / 12" x 24" (Actual)
	Packaging SF/Carton	6" x 48" - 54 sqft/ctn / 12" x 24" - 44 sqft/ctn
	Cartons/Pallet	6" x 48" - 54 ctns/pallet / 12" x 24 - 60 ctns/pallet
	Weight/Carton	6" x 48" = 44.09 lbs/ctn / 12" x 24" - 36.67 lbs/ctn

LVT	Brand	Aladdin Commercial
	Style Name / Number	Familiar Frontier P & S / AH079
	Product Type	Luxury Vinyl Tile
	Wear Layer	6 mil
	Finish	Commercial Urethane Finish
	Colors Available	14
	Size	6" x 48" (Actual) / 12" x 24" (Actual)
	Packaging SF/Carton	6" x 48" - 54 sqft/ctn / 12" x 24" - 44 sqft/ctn
	Cartons/Pallet	6" x 48" - 54 ctns/pallet / 12" x 24 - 60 ctns/pallet
	Weight/Carton	6" x 48" = 44.09 lbs/ctn / 12" x 24" - 36.67 lbs/ctn

LVT	Brand	Aladdin Commercial
	Style Name / Number	Familiar Frontier Plus / AH080
	Product Type	Luxury Vinyl Tile
	Wear Layer	12 mil
	Finish	Commercial Urethane Finish
	Colors Available	14
	Size	6" x 48" (Actual) / 12" x 24" (Actual)
	Packaging SF/Carton	6" x 48" - 54 sqft/ctn / 12" x 24" - 44 sqft/ctn
	Cartons/Pallet	6" x 48" - 54 ctns/pallet / 12" x 24 - 60 ctns/pallet
	Weight/Carton	6" x 48" = 44.09 lbs/ctn / 12" x 24" - 36.67 lbs/ctn

LVT	Brand	Aladdin Commercial
	Style Name / Number	Familiar Frontier Plus P & S / AH081
	Product Type	Luxury Vinyl Tile
	Wear Layer	12 mil
	Finish	Commercial Urethane Finish
	Colors Available	14
	Size	6" x 48" (Actual) / 12" x 24" (Actual)
	Packaging SF/Carton	6" x 48" - 54 sqft/ctn / 12" x 24" - 44 sqft/ctn
	Cartons/Pallet	6" x 48" - 54 ctns/pallet / 12" x 24 - 60 ctns/pallet
	Weight/Carton	6" x 48" = 44.09 lbs/ctn / 12" x 24" - 36.67 lbs/ctn

LVT	Brand	Aladdin Commercial
	Style Name / Number	Familiar Frontier Plus Flex Clic / AH082
	Product Type	Luxury Vinyl Tile
	Wear Layer	12 mil
	Finish	Commercial Urethane Finish
	Colors Available	14
	Size	6" x 48" (Actual) / 12" x 24" (Actual)
	Packaging SF/Carton	6" x 48" - 32 sqft/ctn / 12" x 24" - 32 sqft/ctn
	Cartons/Pallet	6" x 48" - 54 ctns/pallet / 12" x 24 - 54 ctns/pallet
	Weight/Carton	6" x 48" = 41.88 lbs/ctn / 12" x 24" - 41.88 lbs/ctn

LVT	Brand	Aladdin Commercial
	Style Name / Number	Familiar Frontier Plus Pad / AH083
	Product Type	Luxury Vinyl Tile
	Wear Layer	12 mil
	Finish	Commercial Urethane Finish
	Colors Available	14
	Size	6" x 48" (Actual) / 12" x 24" (Actual)
	Packaging SF/Carton	6" x 48" - 32 sqft/ctn / 12" x 24" - 32 sqft/ctn
	Cartons/Pallet	6" x 48" - 54 ctns/pallet / 12" x 24 - 54 ctns/pallet
	Weight/Carton	6" x 48" = 41.88 lbs/ctn / 12" x 24" - 41.88 lbs/ctn

Brand	Aladdin Commercial
Style Name / Number	Familiar Frontier (Universal Specifications)
Classification	ASTM F1700 - Class III, Type A - Smooth, Type B - Embossed
Squareness	ASTM F 2421 - Passes - ±0.10" max
Size and Tolerance	Tile ASTM F2055; Plank ASTM F2421 - Passes - ±0.016"/linear foot
Thickness	ASTM F386 - Passes - as specified ±0.005"
Flexibility	ASTM F137 - Passes - 1" mandrel
Dimensional Stability	ASTM F2199 - Passes - 0.020"/linear foot max
Residual Indentation	ASTM F1914 - Passes - Average less than 8% maximum single reading 10%
Resistance to Chemicals	ASTM F925 - Passes - No more than a slight change in surface dylling, surface attack or staining
Resistance to Light	ASTM F1515 - Passes - ΔE <8
Resistance to Heat Flux	ASTM E649 - Class 1 (>0.45 W/cm2)
Smoke Density	ASTM E662 Part A - Less than 450
Installation Method	AH078/AH080 - Glue Down; AH079/AH081 - Peel & Stick; AH082/AH083 - Clic
Adhesive	M95.0 Resilient Flooring Adhesive, MS160 Spray or M700 Pressure Sensitive Adhesive
Optional Underlayment	Mohawk AccuSound™ - Glue Down; Mohawk ActiveSound - Clic
Certification	FloorScore® Certified
Warranty	Limited 5 Year Light Commercial Warranty (6 Mil) Limited 10 Year Light Commercial Warranty (12 Mil) Limited 25 Year Residential Warranty

Aladdin[™]
COMMERCIAL

Mohawk Industries, Inc. warrants its adhesives for the life of the original installation only when a Mohawk Industries style (product) is installed. Mohawk's floor preparation procedures must be followed to ensure that the substrate has been prepared properly. Failure to use Mohawk Industries adhesives or to follow Mohawk's floor preparation procedures will void all lifetime adhesive warranties. Please contact your local Sales Representative for installation guidelines.

Mohawk is providing this architect folder for the purpose of promoting our commercial business. Color may vary from dye lot to dye lot. Substitution of material may be made due to improved technology, supply limitations or other factors. The performance of this product is not affected by such variations. We recommend the use of chair pads on all commercial installations.

For current and complete specifications please call tech support at 888-387-9881 or visit www.AladdinCommercial.com I 800.233.4490

1039_Aug/2021

