

Curated Express Select

Chex II, City Park II, Lifted Space, District Place Broadloom





Cover: Chex II 599, District Place 599
City Park II 949



Aladdin Commercial is dedicated to sustainability and innovation

By utilizing the most innovative materials and processes, Aladdin Commercial offers comprehensive flooring solutions that are created specifically for commercial interiors.

FIBER

EnviroStrand™ SD

EnviroStrand™ solution-dyed fiber aligns Aladdin Commercial's leadership in sustainability and design. Aladdin utilizes a patented process that enhances the strength of the yarn while incorporating a multi-step purification process ensuring the carpet resists dirt, grime and contaminants.

- Constructed with our patented technology, providing the ultimate innovation in PET carpet
- Through our patented process, Mohawk recycles 6.2 billion PET bottles every year. If placed end to end, these bottles would circle the earth 31.4 times
- Contains an average of 74% total recycled content

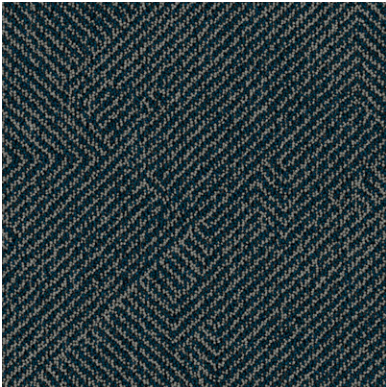
BACKING

Weldlok®

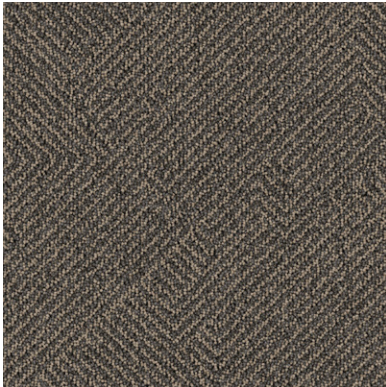
Weldlok® is the standard broadloom backing system specifically designed for commercial applications. The Weldlok backing is laminated to our products utilizing a commercial thermoset adhesive. The adhesive is designed to encapsulate and penetrate the carpet back stitch in the main application coat, while the second application coat secures the secondary backing to the carpet substrate for a cost effective performance standard.

- Excellent pattern match capabilities
- Direct glue or stretch in installations
- Minimum 45% pre-consumer recycled content by total product weight
- NSF/ANSI 140 Gold certified
- CRI Green Label Plus certified®

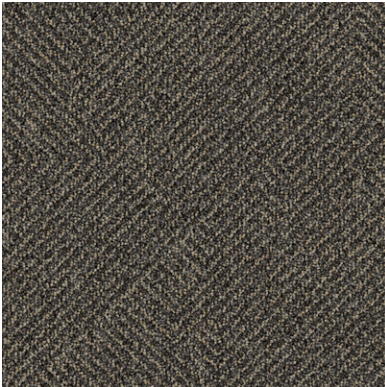
DISTRICT PLACE



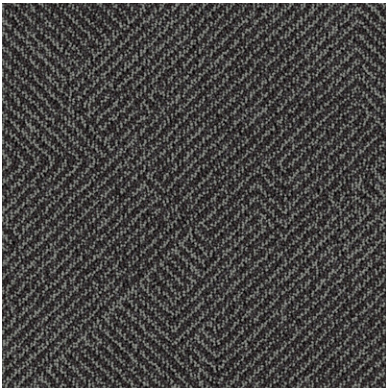
Village Place 599



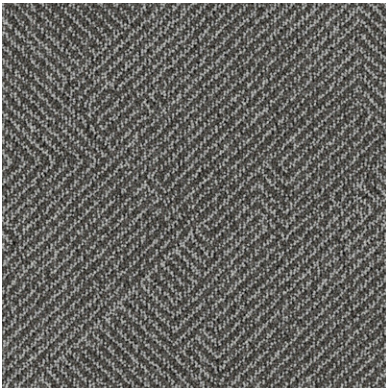
Plaza Point 758



City View 949

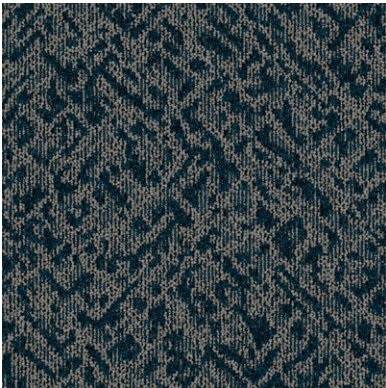


Downtown Loop 959



Upper Westside 997

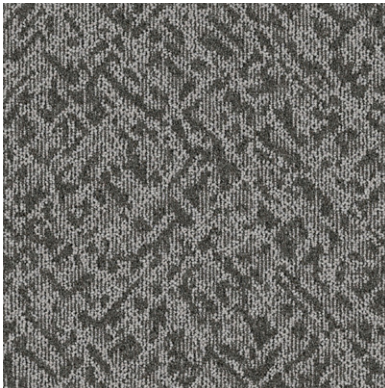
LIFTED SPACE



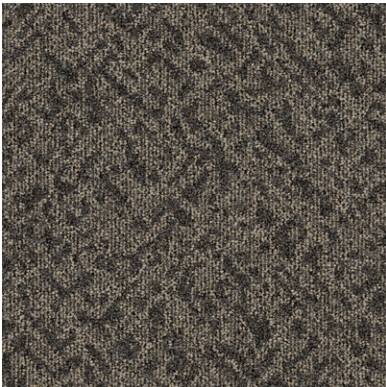
Village Place 599



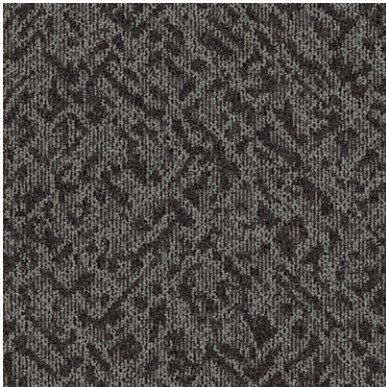
Plaza Point 758



City View 949

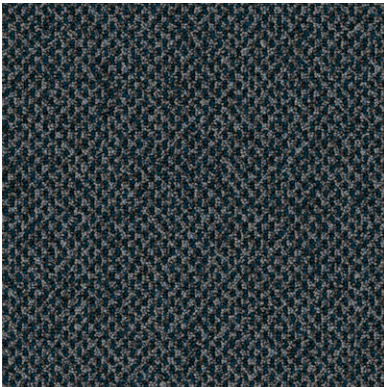


Downtown Loop 959

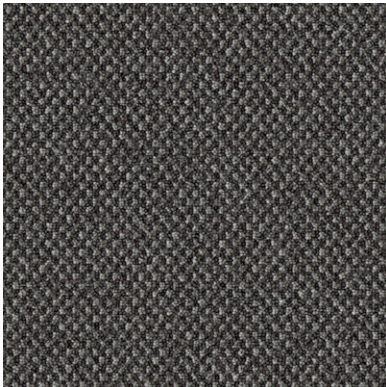


Upper Westside 997

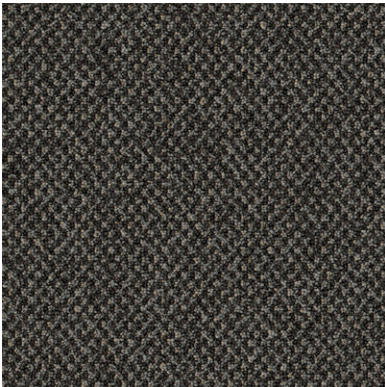
CHEX II



River Landing 599

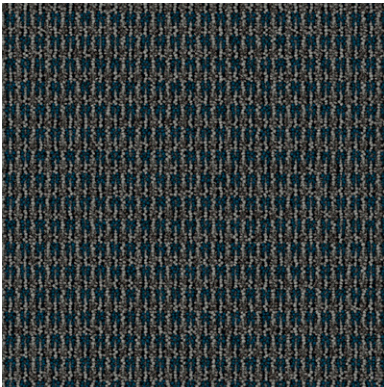


Town Square 949

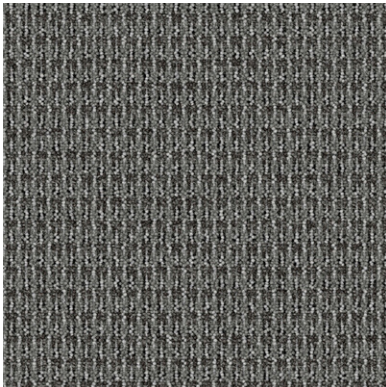


Historical Row 997

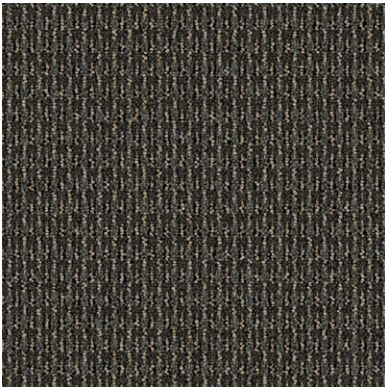
CITY PARK II



River Landing 599



Town Square 949



Historical Row 997

Specifications

DISTRICT PLACE	Brand.....	Aladdin Commercial
	Collection.....	Curated Express Select
	Style Name / Number	District Place / 2B238
	Construction	Tufted
	Surface Appearance.....	Textured Patterned Loop
	Gauge	1/12 (47.00 rows per 10cm)
	Density	4,528
	Dye Method.....	100% Solution Dyed
	Fiber Type.....	EnviroStrand® SD PET
	Stain Release Technology	Mohawk Protection Plus Stain
	Soil Release Technology	Mohawk Protection Plus Soil
	Primary Backing	Weldlok®
	Indoor Air Quality	Green Label Plus Certified # 8216
	NSF 140	Gold
	Width.....	12 ft (3.66 m)
	Pattern Repeat	18" W x 24.5" L
	Flammability	ASTM E 648 Class 1 (Glue Down)
	Smoke Density.....	ASTM E 662 Less than 450
	Static Propensity	AATCC-134 Under 3.5 KV
	Warranties.....	10 Year Limited Wear Warranty 10 Year Limited Static Protection Warranty 10 Year Limited Colorfastness to Light Warranty 10 Year Limited Stain Resistance Warranty 10 Year Limited Colorfastness to Atmospheric Contaminants

CHEX II	Brand.....	Aladdin Commercial
	Collection.....	Curated Express Select
	Style Name / Number	CheX II / 2B185
	Construction	Tufted
	Surface Appearance.....	Textured Patterned Loop
	Gauge	1/12 (47.00 rows per 10cm)
	Density	6,101
	Dye Method.....	100% Solution Dyed
	Fiber Type.....	EnviroStrand® SD PET
	Stain Release Technology	Mohawk Protection Plus Stain
	Soil Release Technology	Mohawk Protection Plus Soil
	Primary Backing	Weldlok®
	Indoor Air Quality	Green Label Plus Certified # 8216
	NSF 140	Gold
	Width.....	12 ft (3.66 m)
	Pattern Repeat	0.4" W x 1" L
	Flammability	ASTM E 648 Class 1 (Glue Down)
	Smoke Density.....	ASTM E 662 Less than 450
	Static Propensity	AATCC-134 Under 3.5 KV
	Warranties.....	10 Year Limited Wear Warranty 10 Year Limited Static Protection Warranty 10 Year Limited Colorfastness to Light Warranty 10 Year Limited Stain Resistance Warranty 10 Year Limited Colorfastness to Atmospheric Contaminants

LIFTED SPACE	Brand.....	Aladdin Commercial
	Collection.....	Curated Express Select
	Style Name / Number	Lifted Space / 2B237
	Construction	Tufted
	Surface Appearance.....	Textured Pattern Loop
	Gauge	1/12 (47.00 rows per 10cm)
	Density	5,000
	Dye Method.....	100% Solution Dyed
	Fiber Type.....	EnviroStrand® SD PET
	Stain Release Technology	Mohawk Protection Plus Stain
	Soil Release Technology	Mohawk Protection Plus Soil
	Primary Backing	Weldlok®
	Indoor Air Quality	Green Label Plus Certified # 8216
	NSF 140	Gold
	Width.....	12 ft (3.66 m)
	Pattern Repeat	18" W x 22.8" L
	Flammability	ASTM E 648 Class 1 (Glue Down)
	Smoke Density.....	ASTM E 662 Less than 450
	Static Propensity	AATCC-134 Under 3.5 KV
	Warranties.....	10 Year Limited Wear Warranty 10 Year Limited Static Protection Warranty 10 Year Limited Colorfastness to Light Warranty 10 Year Limited Stain Resistance Warranty 10 Year Limited Colorfastness to Atmospheric Contaminants

CITY PARK II	Brand.....	Aladdin Commercial
	Collection.....	Curated Express Select
	Style Name / Number	City Park II / 2B182
	Construction	Tufted
	Surface Appearance.....	Textured Pattern Loop
	Gauge	1/12 (47.00 rows per 10cm)
	Density	4,468
	Dye Method.....	100% Solution Dyed
	Fiber Type.....	EnviroStrand® SD PET
	Stain Release Technology	Mohawk Protection Plus Stain
	Soil Release Technology	Mohawk Protection Plus Soil
	Primary Backing	Weldlok®
	Indoor Air Quality	Green Label Plus Certified # 8216
	NSF 140	Gold
	Width.....	12 ft (3.66 m)
	Pattern Repeat	0.6" W x 0.8" L
	Flammability	ASTM E 648 Class 1 (Glue Down)
	Smoke Density.....	ASTM E 662 Less than 450
	Static Propensity	AATCC-134 Under 3.5 KV
	Warranties.....	10 Year Limited Wear Warranty 10 Year Limited Static Protection Warranty 10 Year Limited Colorfastness to Light Warranty 10 Year Limited Stain Resistance Warranty 10 Year Limited Colorfastness to Atmospheric Contaminants

Aladdin[™]
COMMERCIAL

Mohawk Industries, Inc. warrants its adhesives for the life of the original installation only when a Mohawk Industries style (product) is installed. Mohawk's floor preparation procedures must be followed to ensure that the substrate has been prepared properly. The use of Mohawk branded adhesives is required to ensure optimum results and are the only approved adhesives warranted by Mohawk. Please contact your local Sales Representative for installation guidelines.

Mohawk is providing this architect folder for the purpose of promoting our commercial business. Color may vary from dye lot to dye lot. Substitution of material may be made due to improved technology, supply limitations or other factors. The performance of this product is not affected by such variations. We recommend the use of chair pads on all commercial installations.

These patterns contain inherent characteristics which may result in pattern run off and/or pattern appearance variations at the seams or tile edges (darker or lighter pattern lines). These characteristics are inherent in the patterns and are not manufacturing defects. Consideration to these characteristics should be given when selecting an installation method.

For current and complete specifications please call tech support at 888-387-9881 or visit www.AladdinCommercial.com | 800.233.4490 0215C_Nov/2025

