

# Curated Express Collection

Core Pattern, Directions, Traction II, True Form





Cover: Core Pattern, 358 Steel  
Core Pattern, 983 Pewter



Directions, 579 Navy



True Form, 714 Hazy Hue



Traction II, 837 Sand Dune



Core Pattern, 751 Linen

Core Pattern Colorways



358 Steel



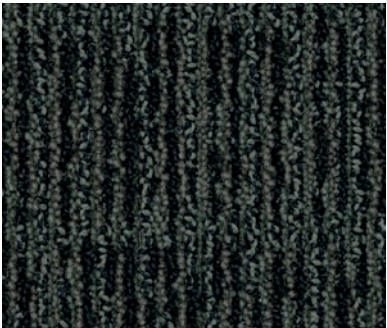
751 Linen



955 Iron

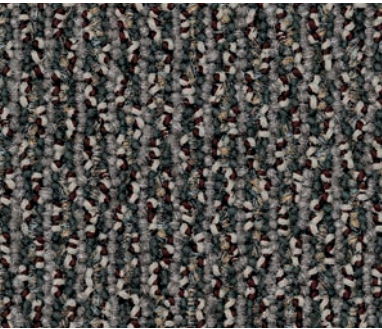


983 Pewter

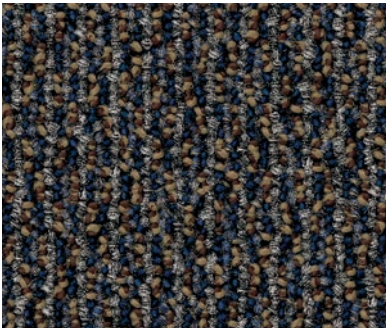


999 Ink

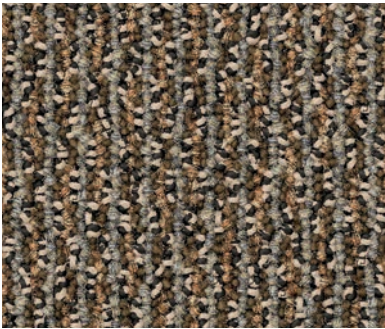
Directions Colorways



558 Mineralite



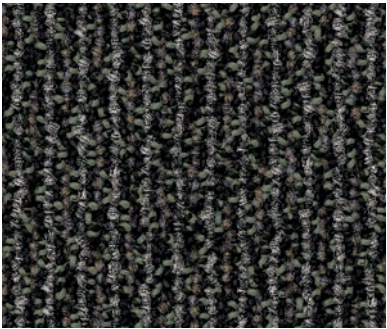
579 Navy



831 Almond

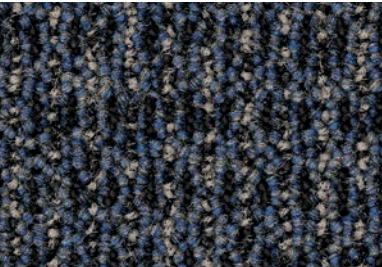


848 Granite



989 Charcoal

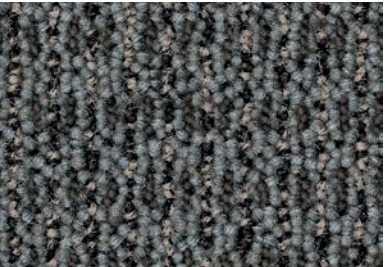
True Form Colorways



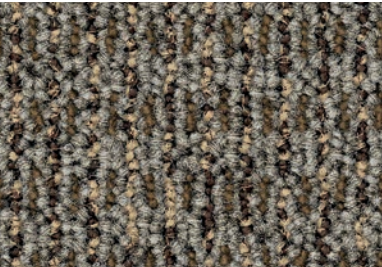
559B Balanced Blue



679B Modern Movement



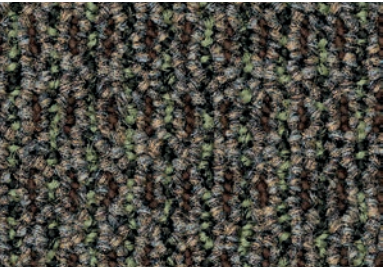
714B Hazy Hue



822 Natural Harmony



838 Textural Beige



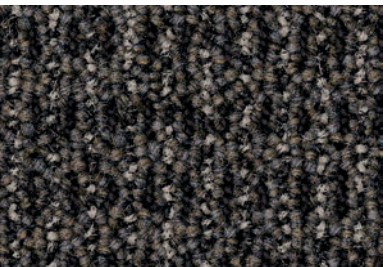
928 Organic Unity



958 Neutral Value

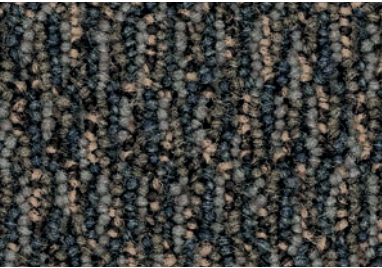


959B Tinted Gray

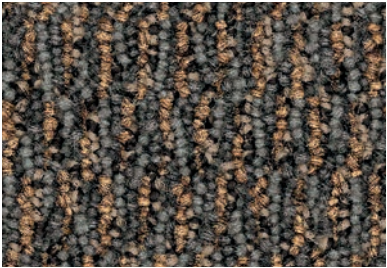


978B Carbon Colour

Traction II Colorways



589 Jeweled Lapiz



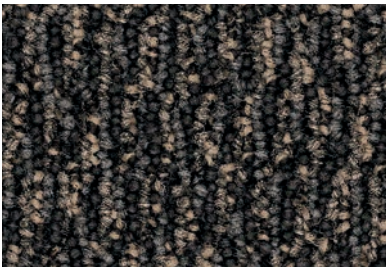
719 Wrought Iron



837 Sand Dune



928 Driftwood



989 Midnight

Aladdin Commercial is dedicated to sustainability and innovation

By utilizing the most innovative materials and processes, Aladdin Commercial offers comprehensive flooring solutions that are created specifically for commercial interiors.

FIBER

Colorstrand® SD

Colorstrand® fiber has continually exceeded the demanding expectations of our customers for their projects. With the design flexibility and color intensity of solution dyed fiber, Colorstrand delivers lasting beauty and value.

- Unsurpassed colorfastness to light, atmospheric contaminants, and harsh cleaning agents
- Excellent durability and longevity of color
- Mohawk Protection Plus Soil & Stain Resistant Technology
- SCS Global Services certified 30% pre-consumer recycled content
- CRI Green Label Plus® certified

BACKING

Weldlok®

Weldlok® is the standard broadloom backing system specifically designed for commercial applications. The Weldlok backing is laminated to our products utilizing a commercial thermoset adhesive. This adhesive is designed to encapsulate and penetrate the carpet back stitch in the main application coat, while the second application coat secures the secondary backing to the carpet substrate for a cost effective performance standard.

- Excellent pattern match capabilities
- Direct glue or stretch in installations
- Minimum 45% pre-consumer recycled content by total product weight
- NSF/ANSI 140 Gold certified
- CRI Green Label Plus® certified

Specifications

ALADDIN COMMERCIAL BROADLOOM	Brand.....	Aladdin Commercial
	Collection.....	Curated Express Collection
	Style Name / Number .....	Core Pattern / 2B232
	Construction.....	Tufted
	Surface Appearance.....	Textured Patterned Loop
	Gauge .....	1/12" (47.00 rows per 10 cm)
	Density .....	4,531
	Dye Method.....	100% Solution Dyed
	Fiber Type.....	Colorstrand® SD Nylon
	Stain Release Technology .....	Mohawk Protection Plus Stain
	Soil Release Technology .....	Mohawk Protection Plus Soil
	Primary Backing .....	Weldlok®
	Indoor Air Quality .....	Green Label Plus Certified # 8216
	NSF 140 .....	Gold
	Size .....	12 ft. width (3.66m)
	Pattern Repeat .....	18" W x 22" L

	Flammability.....	ASTM E 648 Class 1 (Glue Down)
	Smoke Density.....	ASTM E 662 Less than 450
	Static Propensity .....	AATCC-134 Under 3.5 KV
	Warranties.....	Lifetime Limited Wear Warranty
		Lifetime Limited Static Protection Warranty
		Lifetime Limited Colorfastness to Light Warranty
		10 Year Limited Stain Resistance Warranty
		10 Year Limited Colorfastness to Atmospheric Contaminants

ALADDIN COMMERCIAL BROADLOOM	Brand.....	Aladdin Commercial
	Collection.....	Curated Express Collection
	Style Name / Number .....	Traction II / 2B132
	Construction.....	Tufted
	Surface Appearance.....	Textured Patterned Loop
	Gauge .....	1/10" (39.37 rows per 10cm)
	Density .....	7,251
	Dye Method.....	100% Solution Dyed
	Fiber Type.....	Colorstrand® SD Nylon
	Stain Release Technology .....	Mohawk Protection Plus Stain
	Soil Release Technology .....	Mohawk Protection Plus Soil
	Primary Backing .....	Weldlok®
	Indoor Air Quality .....	Green Label Plus Certified # 8216
	NSF 140 .....	Gold
	Size .....	12 ft. width (3.66m)
	Pattern Repeat .....	None

	Flammability.....	ASTM E 648 Class 1 (Glue Down)
	Smoke Density.....	ASTM E 662 Less than 450
	Static Propensity .....	AATCC-134 Under 3.5 KV
	Warranties.....	Lifetime Limited Wear Warranty
		Lifetime Limited Static Protection Warranty
		Lifetime Limited Colorfastness to Light Warranty
		10 Year Limited Stain Resistance Warranty
		10 Year Limited Colorfastness to Atmospheric Contaminants

ALADDIN COMMERCIAL BROADLOOM	Brand.....	Aladdin Commercial
	Collection.....	Curated Express Collection
	Style Name / Number .....	Directions / 2B181
	Construction.....	Tufted
	Surface Appearance.....	Graphic Loop
	Gauge .....	1/12" (47.00 rows per 10cm)
	Density .....	5,714
	Dye Method.....	100% Solution Dyed
	Fiber Type.....	Colorstrand® SD Nylon
	Stain Release Technology .....	Mohawk Protection Plus Stain
	Soil Release Technology .....	Mohawk Protection Plus Soil
	Primary Backing .....	Weldlok®
	Indoor Air Quality .....	Green Label Plus Certified # 8216
	NSF 140 .....	Gold
	Size .....	12 ft. width (3.66m)
	Pattern Repeat .....	1.0" W x 1.3" L

	Flammability.....	ASTM E 648 Class 1 (Glue Down)
	Smoke Density.....	ASTM E 662 Less than 450
	Static Propensity .....	AATCC-134 Under 3.5 KV
	Warranties.....	Lifetime Limited Wear Warranty
		Lifetime Limited Static Protection Warranty
		Lifetime Limited Colorfastness to Light Warranty
		10 Year Limited Stain Resistance Warranty
		10 Year Limited Colorfastness to Atmospheric Contaminants

ALADDIN COMMERCIAL BROADLOOM	Brand.....	Aladdin Commercial
	Collection.....	Curated Express Collection
	Style Name / Number .....	True Form / 1230
	Construction.....	Tufted
	Surface Appearance.....	Textured Heathered Loop
	Gauge .....	1/12" (47.00 rows per 10cm)
	Density .....	6,406
	Dye Method.....	100% Solution Dyed
	Fiber Type.....	Colorstrand® SD Nylon
	Stain Release Technology .....	Mohawk Protection Plus Stain
	Soil Release Technology .....	Mohawk Protection Plus Soil
	Primary Backing .....	Weldlok®
	Indoor Air Quality .....	Green Label Plus Certified # 8216
	NSF 140 .....	Gold
	Size .....	12 ft. width (3.66m)
	Pattern Repeat .....	0.8" W x 1.55" L

	Flammability.....	ASTM E 648 Class 1 (Glue Down)
	Smoke Density.....	ASTM E 662 Less than 450
	Static Propensity .....	AATCC-134 Under 3.5 KV
	Warranties.....	Lifetime Limited Wear Warranty
		Lifetime Limited Static Protection Warranty
		Lifetime Limited Colorfastness to Light Warranty
		10 Year Limited Stain Resistance Warranty
		10 Year Limited Colorfastness to Atmospheric Contaminants



Mohawk Industries, Inc. warrants its adhesives for the life of the original installation only when a Mohawk Industries style (product) is installed. Mohawk’s floor preparation procedures must be followed to ensure that the substrate has been prepared properly. The use of Mohawk branded adhesives is required to ensure optimum results and are the only approved adhesives warranted by Mohawk. Please contact your local Sales Representative for installation guidelines.

Mohawk is providing this architect folder for the purpose of promoting our commercial business. Color may vary from dye lot to dye lot. Substitution of material may be made due to improved technology, supply limitations or other factors. The performance of this product is not affected by such variations. We recommend the use of chair pads on all commercial installations.

These patterns contain inherent characteristics which may result in pattern run off and/or pattern appearance variations at the seams or tile edges (darker or lighter pattern lines). These characteristics are inherent in the patterns and are not manufacturing defects. Consideration to these characteristics should be given when selecting an installation method.

For current and complete specifications please call tech support at 888-387-9881 or visit [www.AladdinCommercial.com](http://www.AladdinCommercial.com) I 800.233.4490 0183C\_Feb/2025

