

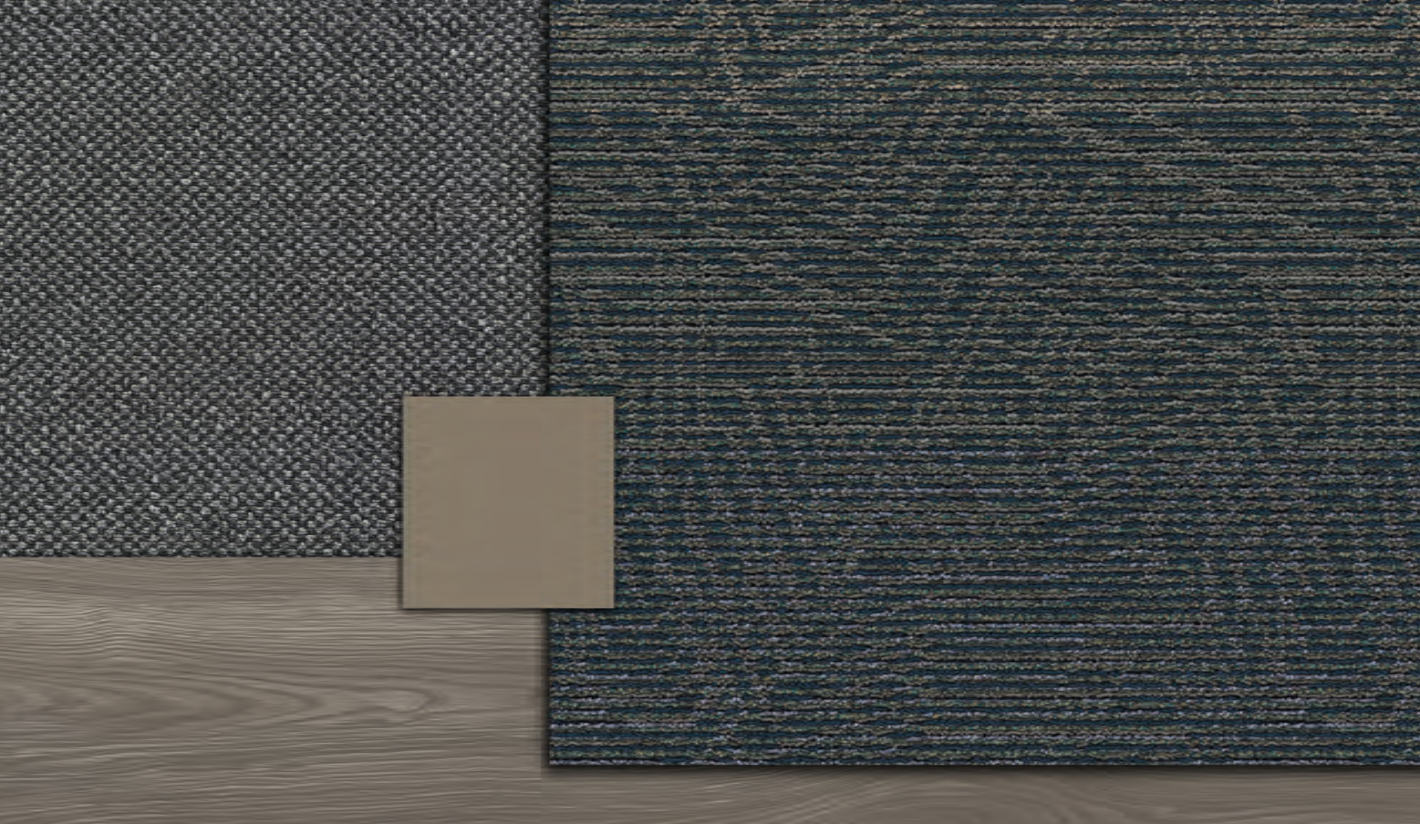
Clear Intention Collection

Action Items, Driving Factor









Clear Intention Collection

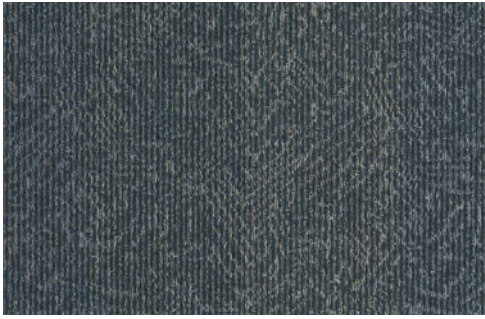
Think green with our Clear Intention Collection by Aladdin Commercial. Clear Intention contains a brand new PET color option in a gorgeous teal-green rolling thread-up hue to further provide beautiful floor play and maximum solutions for your mainstreet commercial environments. Featuring 2 subtle geometric-inspired patterns, Clear Intention is offered in 24" x 24" carpet tiles and is constructed using our sustainable EnviroStrand SD fiber backed by UltraSet® Matrix.

Features:

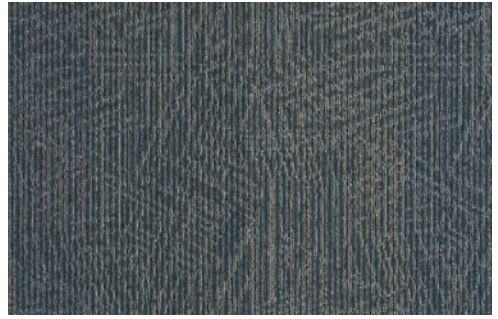
- 5 colors in 2 styles
- 24" x 24" tiles
- Constructed with EnviroStrand SD fiber and UltraSet Matrix backing
- Features modern, geometric patterns
- Green Label Plus Certified
- Coordinates with Aladdin Commercial broadloom, hard surface, and accessories
- Designed for easy installation with mergeable patterns



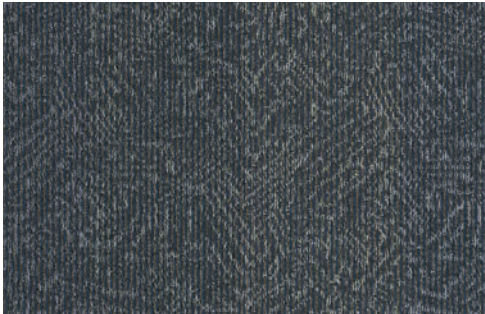
Colorways for Clear Intention Collection



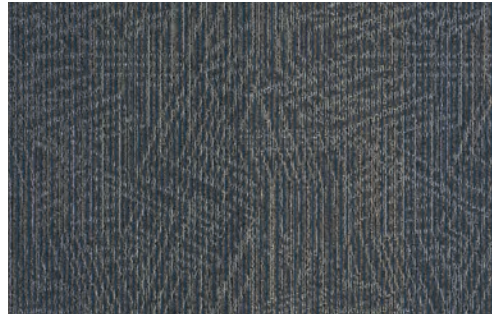
Driving Factor 556



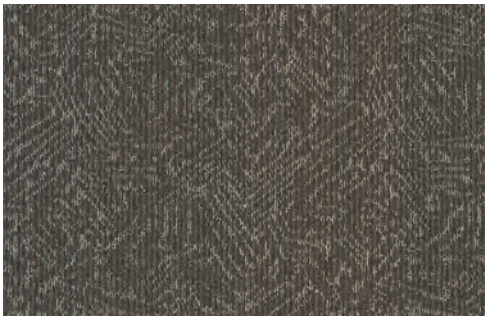
Action Items 556



Driving Factor 559



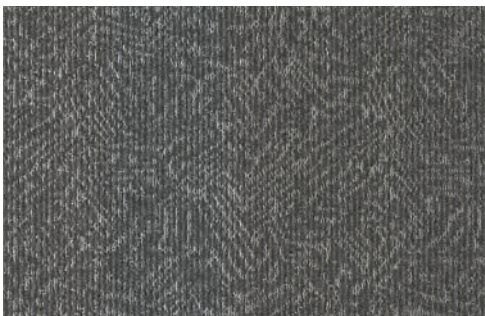
Action Items 559



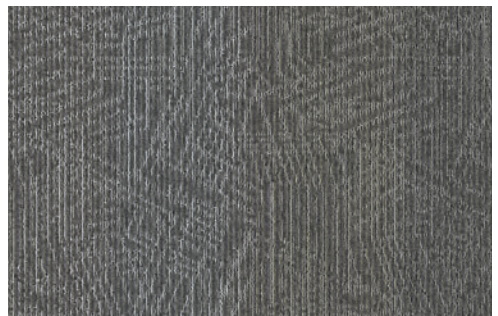
Driving Factor 888



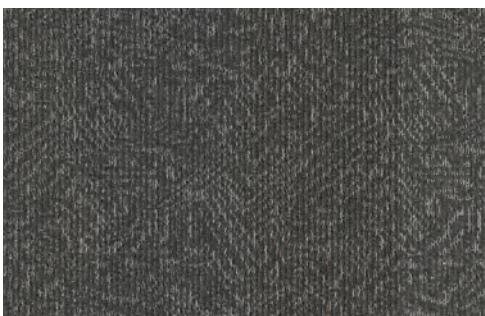
Action Items 888



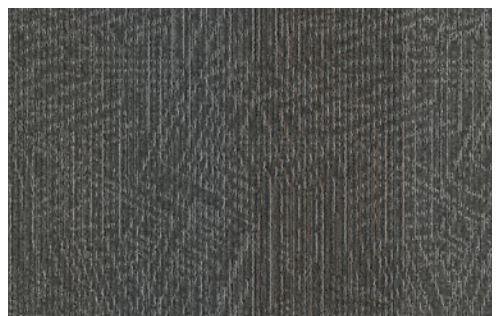
Driving Factor 949



Action Items 949



Driving Factor 978



Action Items 978

Specifications

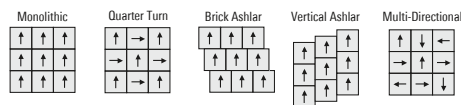
CARPET TILE	<input type="checkbox"/>	Brand	Aladdin Commercial
		Style Name / Number	Action Items / 2B215
		Construction	Tufted
		Surface Appearance	Textured Patterned Multi-Colored Loop
		Gauge.....	1/12 (47.00 rows per 10cm)
		Density.....	4,923
		Dye Method.....	100% Solution Dyed
		Fiber Type	Envirostrand® SD P.E.T.
		Soil Release Technology.....	Mohawk Protection Plus Soil
		Primary Backing	Non Woven Synthetic
		Secondary Backing	UltraSet® Matrix
		Indoor Air Quality	Green Label Plus Certified # 1171
		NSF 140	Gold
		Size	24" x 24" (.6096 m x .6096 m)
		Installation Method	Quarter Turn / Monolithic / Brick Ashlar/ Vertical Ashlar/ Multi-Directional
		Flammability	ASTM E 648 Class 1 (Glue Down)
		Smoke Density	ASTM E 662 Less than 450
		Static Propensity	AATCC-134 Under 3.5 KV
	Warranties.....	10 Year Limited Wear Warranty 10 Year Limited Static Protection Warranty 10 Year Limited Edge Ravel, Zippering, Delamination, and Dimensional Stability Warranty 10 Year Limited Colorfastness to Light Warranty 10 Year Limited Stain Resistance Warranty 10 Year Limited Colorfastness to Atmospheric Contaminants	

CARPET TILE	<input type="checkbox"/>	Brand	Aladdin Commercial
		Style Name / Number	Driving Factor / 2B216 Quickship
		Construction	Tufted
		Surface Appearance	Textured Patterned Multi-Colored Loop
		Gauge.....	1/12 (47.00 rows per 10cm)
		Density.....	5,052
		Dye Method.....	100% Solution Dyed
		Fiber Type	Envirostrand® SD P.E.T.
		Soil Release Technology.....	Mohawk Protection Plus Soil
		Primary Backing	Non Woven Synthetic
		Secondary Backing	UltraSet® Matrix
		Indoor Air Quality	Green Label Plus Certified # 1171
		NSF 140	Gold
		Size	24" x 24" (.6096 m x .6096 m)
		Installation Method	Quarter Turn / Monolithic / Brick Ashlar/ Vertical Ashlar/ Multi-Directional
		Flammability	ASTM E 648 Class 1 (Glue Down)
		Smoke Density	ASTM E 662 Less than 450
		Static Propensity	AATCC-134 Under 3.5 KV
	Warranties.....	10 Year Limited Wear Warranty 10 Year Limited Static Protection Warranty 10 Year Limited Edge Ravel, Zippering, Delamination, and Dimensional Stability Warranty 10 Year Limited Colorfastness to Light Warranty 10 Year Limited Stain Resistance Warranty 10 Year Limited Colorfastness to Atmospheric Contaminants	



Printed on FSC® certified paper

Installation Instructions:



Mohawk Industries, Inc. warrants its adhesives for the life of the original installation only when a Mohawk Industries style (product) is installed. Mohawk's floor preparation procedures must be followed to ensure that the substrate has been prepared properly. Failure to use Mohawk Industries adhesives or to follow Mohawk's floor preparation procedures will void all lifetime adhesive warranties. Please contact your local Sales Representative for installation guidelines.

Mohawk is providing this architect folder for the purpose of promoting our commercial business. Color may vary from dye lot to dye lot. Substitution of material may be made due to improved technology, supply limitations or other factors. The performance of this product is not affected by such variations. We recommend the use of chair pads on all commercial installations.

For current and complete specifications please call tech support at 888-387-9881 or visit www.AladdinCommercial.com | 800.233.4490



Up to 2,000 sq. yds. available within 10 business days or less

