

Cerebral





794 Basket
Cover: 990 Silver







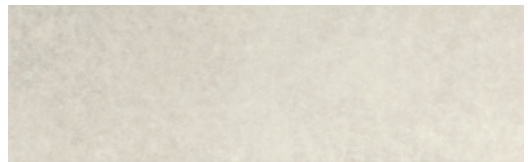


757 Antique

Cerebral Color Options



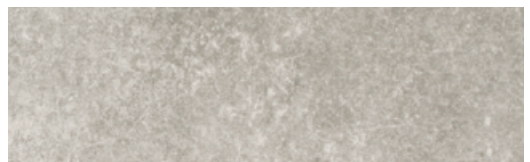
750 Beige



990 Silver



794 Basket



993 Concrete



757 Antique



942 Bronze

Cerebral Ultimate Flex LVT

Features and Benefits:

- 2.5 mm overall gauge
- 20 mil wear layer
- 6" x 48"
- Enhanced Urethane Finish
- 100% Waterproof
- Ease of installation with no acclimation needed
- FloorScore Certified
- Limited 10 Year Light Commercial Warranty
- Limited 25 Year Residential Warranty

Specifications

LVT	Brand	Aladdin Commercial
	Style Name / Number	Cerebral / AH084
	Product Type	Glue Down LVT
	Overall Gauge	2.5 mm
	Wear Layer	20 mil
	Finish	Enhanced Urethane Finish
	Colors Available	6
	Size	6" x 48"
	Construction	Ultimate Flex Luxury Vinyl Tile
	Static Load	ASTM F970 - Passes, modified at 1000 psi
	Classification	ASTM F1700 - Class III, Type A - Smooth, Type B - Embossed
	Squareness	ASTM F 2421 - Passes - $\pm 0.10"$ max
	Size and Tolerance	ASTM F2421 - Passes - $\pm 0.016"/$ linear foot
	Thickness	ASTM F386 - Passes - as specified $\pm 0.005"$
	Flexibility	ASTM F137 - Passes - 1" mandrel
	Dimensional Stability	ASTM F2199 - Passes - 0.020"/linear foot max
	Residual Indentation	ASTM F1914 - Passes - Average less than 8% maximum single reading 10%
	Slip Resistance	ASTM C1028 - Passes Wet: ≥ 0.5
	Resistance to Chemicals	ASTM F925 - Passes - No more than a slight change
	Resistance to Light	ASTM F1515 - Passes - $\Delta E < 8$
	Resistance to Heat	ASTM F1514 - Passes - $\Delta E < 8$
	Critical Radiant Flux	ASTM E648 - Class 1 ($> 0.45 \text{ W/cm}^2$)
	Smoke Density	ASTM E662 Part A - Less than 450
	Installation Method	Glue Down
	Recommended Adhesive	M95.0 Resilient Flooring Adhesive, MS160 Spray, M700 Pressure Sensitive Adhesive or Mohawk V-One Adhesive
	Certification	FloorScore® Certified
	Warranty	Limited 10 Year Light Commercial Warranty Limited 30 Year Residential Warranty

Aladdin[™]
COMMERCIAL

Mohawk Industries, Inc. warrants its adhesives for the life of the original installation only when a Mohawk Industries style (product) is installed. Mohawk's floor preparation procedures must be followed to ensure that the substrate has been prepared properly. Failure to use Mohawk Industries adhesives or to follow Mohawk's floor preparation procedures will void all lifetime adhesive warranties. Please contact your local Sales Representative for installation guidelines.

Mohawk is providing this architect folder for the purpose of promoting our commercial business. Color may vary from dye lot to dye lot. Substitution of material may be made due to improved technology, supply limitations or other factors. The performance of this product is not affected by such variations. We recommend the use of chair pads on all commercial installations.

For current and complete specifications please call tech support at 888-387-9881 or visit www.AladdinCommercial.com I 800.233.4490

