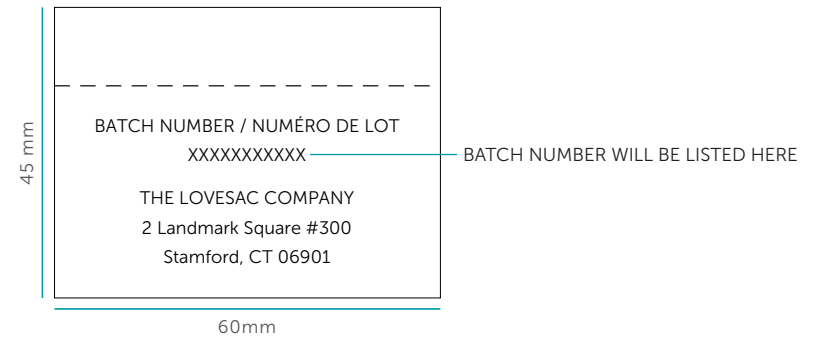
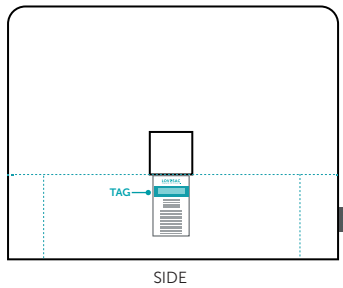


**BATCH NUMBERS** are printed on the batch label. The batch label is the last label on any of our products.

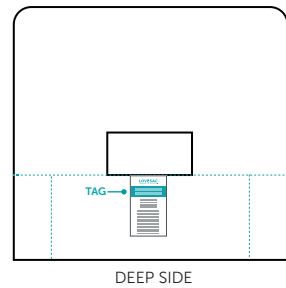
Over the years, Lovesac has used a few different batch labels. Use this document to see where the batch number is located on your product.



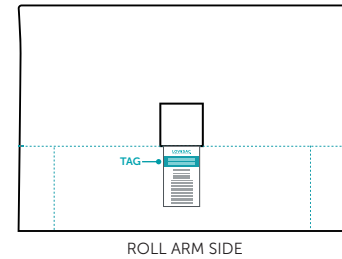
## TAG PLACEMENT: SACTIONALS INSERTS



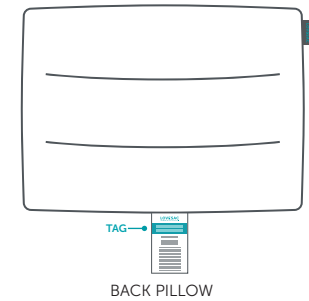
SIDE



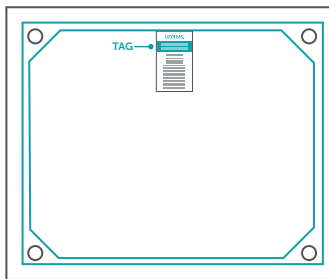
DEEP SIDE



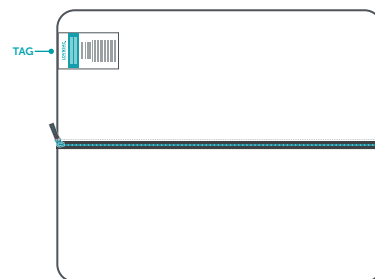
ROLL ARM SIDE



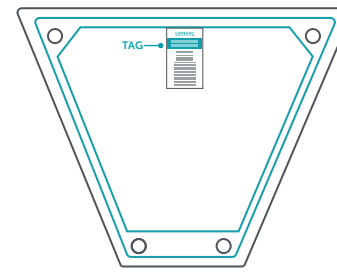
BACK PILLOW



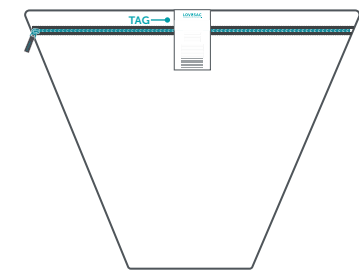
SEAT FRAME  
(bottom)



SEAT CUSHION  
(bottom)



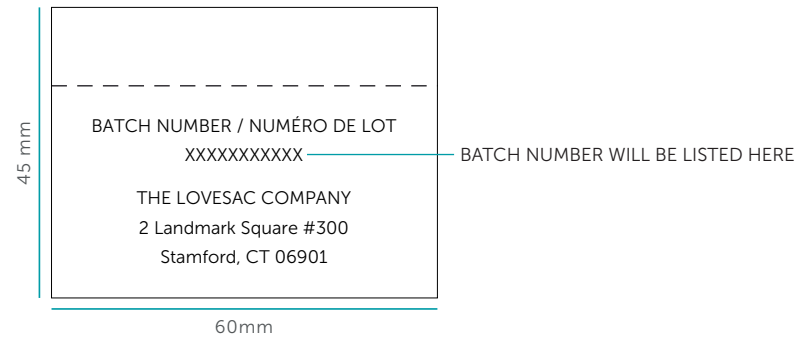
WEDGE SEAT FRAME  
(bottom)



WEDGE CUSHION  
(bottom)

**BATCH NUMBERS** are printed on the batch label. The batch label is the last label on any of our products.

Over the years, Lovesac has used a few different batch labels. Use this document to see where the batch number is located on your product.



## TAG PLACEMENT: SAC INSERTS

Tags are sewn inside the cover, usually opposite the Lovesac Brand Label

