

BONTRAGER

Line and Line Elite dropper posts Assembly/Service Manual

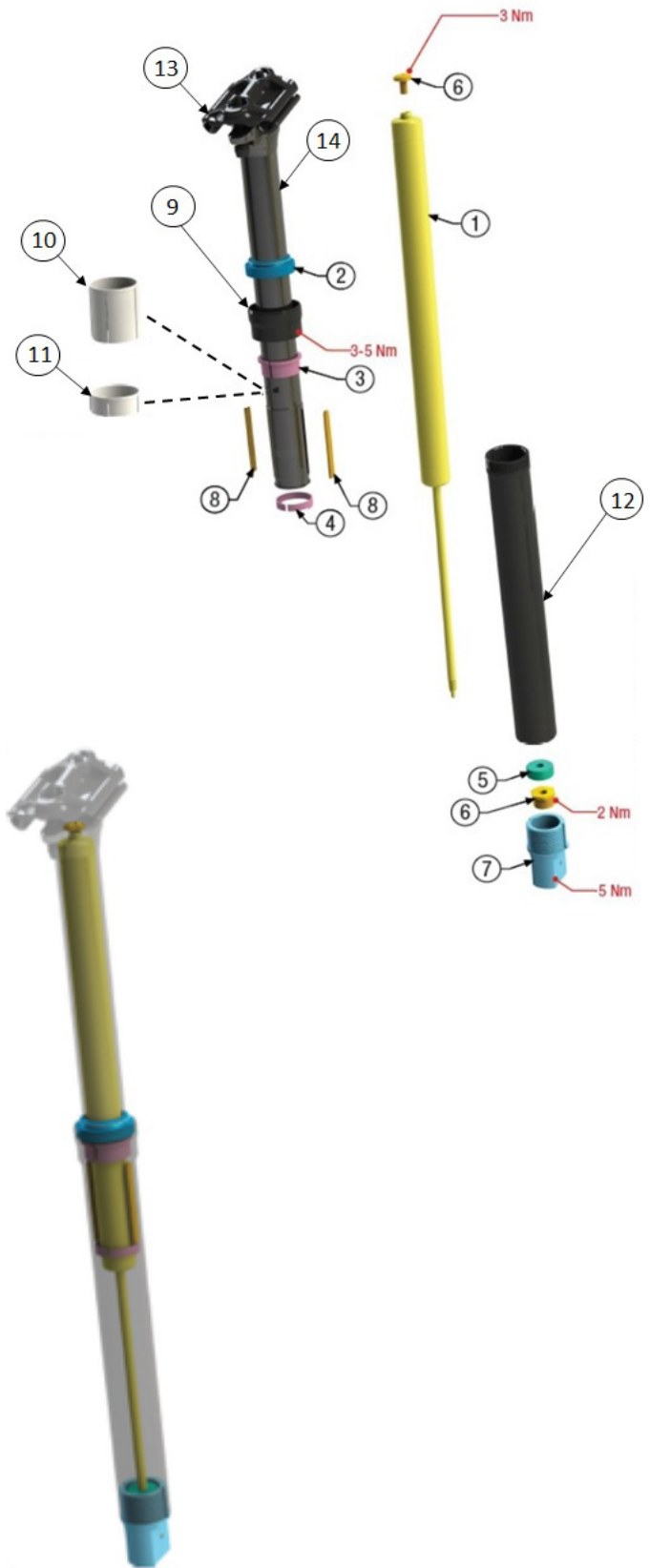
Table of Contents

Line 31.6 dropper parts list	1
Line Elite 34.9 dropper parts list	2
Line Elite 31.6 dropper parts list	3
Line dropper service	4
Travel reducer installation	4
Bi-annual – Clean and lubricate	5
Annual – Complete chassis overhaul	5
Cartridge replacement	6
Line trouble shooting	6
Dropper lever assembly	7

BONTRAGER

Line 31.6 dropper parts list

Item	Description	Part Number
1	Cartridge	W564494 (100mm) W564493 (125mm) W564492 (150mm)
2	Dust seal	W554232
3	Upper bushing	572185
4	Lower bushing	
5	Bump stop	W532638
6	Cartridge mounting bolt & nut	572186
7	Actuator assembly	W562529
8	Keyway (2x)	572184
9	Collar locking ring	N/A
10	Travel reducer	W564788 (30mm)
11	Travel reducer	W564787 (10mm)
12	Lower tube	N/A
13	Saddle clamp	582217
14	Upper tube	N/A



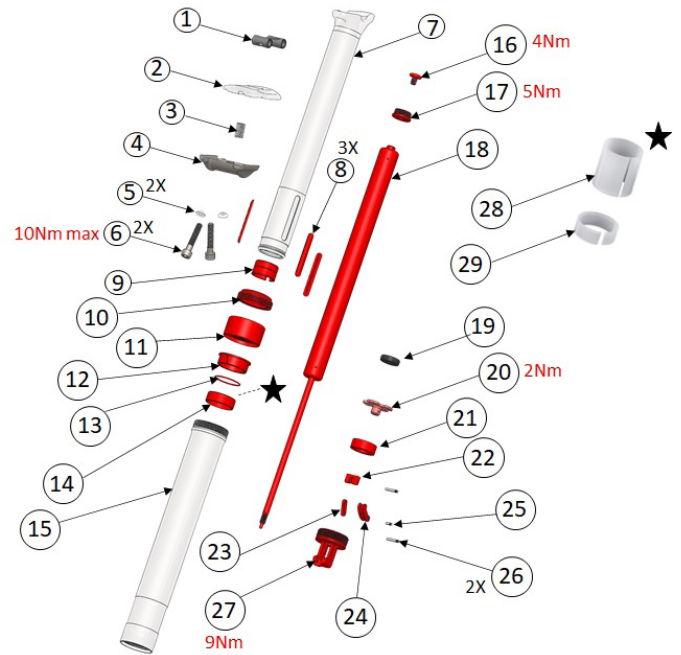
BONTRAGER

Line Elite 34.9 dropper parts list

Item	Description	Part Number
1	Barrel nut	5263424
2	Upper plate	
3	Spring	
4	Lower plate	
5	Washer (2x)	
6	M6xL33 Screw (2x)	
7	Upper seatpost tube	N/A
8	Plastic key (3x)	586439
9	Stabilizer tube	N/A*
10	Dust seal	597151
11	Collar locking ring	N/A
12	Upper bushing	582427
13	O-ring	N/A*
14	Lower bushing	582422
15	Lower seatpost tube	N/A
16	M6 Mounting screw	582419
17	Top nut	N/A*
18	Cartridge	597152 (100mm) 593599 (150mm) 597153 (170mm) 597154 (200mm)
19	Bottom out bumper	**
20	Cartridge lock nut	**
21	Dust prevention foam	5265372 as assembly
22	Slider	
23	Actuator connector link	
24	Actuator main link	
25	Actuator short pin	
26	Actuator long pin (2x)	
27	Low actuator housing	
28	Travel reducer (30mm)	W597162
29	Travel reducer (10mm)	W597161

*For reference only. Not offered for service.

**Preinstalled & included on cartridge, and should not be removed by retailer/consumer.

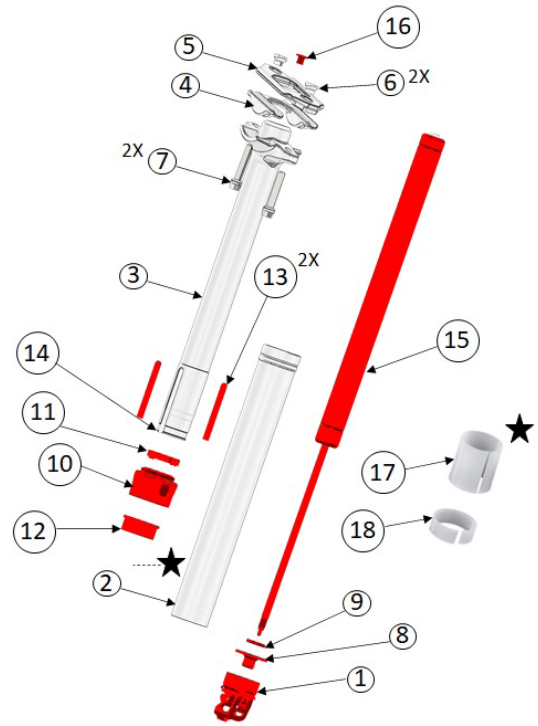


BONTRAGER

Line Elite 31.6 dropper parts list

Item	Description	Part Number
1	Actuator assembly	W569797
2	Lower tube	N/A
3	Upper tube	N/A
4	Lower rail clamp	582216
5	Upper rail clamp	
6	Nut (2x)	
7	Saddle rail clamp bolt (2x)	
8	Thread mount adaptor	*
9	Bumper stop	*
10	Collar locking ring	N/A
11	Dust seal	W554232
12	Upper bushing	596886
13	Keyway (2x)	572184
14	Lower bushing	596886
15	Cartridge	W564865 (100mm) W564866 (150mm) W564867 (170mm) W564868 (200mm)
16	Hex head socket bolt	W569753
17	Travel reducer (30mm)	W564788
18	Travel reducer (10mm)	W564787

*Preinstalled & included on cartridge, and should not be removed by retailer/consumer.



BONTRAGER

Line dropper service

For mechanics or riders with basic mechanical skills, tools, and knowledge.

- Keep your Line dropper post clean. This will give you more years of fun.
- The bi-annual service section (page 5) replaces internal grease.

- o Following the bi-annual service section (page 5) will help ensure the functionality of the post and keep it moving smoothly.
- The complete chassis overhaul section (page 5) replaces all wear items within the system. This will help to maintain smooth travel and reduce the amount of unwanted movement otherwise known as 'play'.

Service at the indicated distance or time – whichever is most appropriate for your riding conditions	Months	Every ride	New bike 1st service	3	6	9	12	24
	Hours			25	50	75	100	200
Wipe stanchion tube clean with a lint free rag		■	■					
Clean and lubricate seat post					■		■	
Complete chassis overhaul								■

Travel reducer installation

NOTE: Do not stack headset spacers in an attempt to create a travel reduction other than the 10mm or the 30mm travel reducers.

1. Compress the dropper post 50%.
2. Turn the collar locking ring counter-clockwise to release it from the lower tube.
3. Pull up the upper bushing.
4. Install the travel reducer below the upper bushing.
5. Slide the travel reducer into the lower tube.

NOTE: Make sure to align the keys on the travel reducer with the keyways in the lower tube.

6. Slide the upper bushing back into place.
7. Torque the collar locking ring on the lower tube to 3-5Nm.

BONTRAGER

Bi-annual – Clean and lubricate

1. Record the saddle position prior to removal.
2. Remove the saddle clamps from the seat post head.
3. Remove the upper cartridge mount bolt.
4. With the post upside down, turn the actuator counter-clockwise to remove the actuator and cartridge.
5. Turn the collar locking ring counter-clockwise to release it from the lower tube.
6. Slide off the lower tube and clean out the old grease with a rag and isopropyl alcohol.
7. Clean the upper tube, upper bushing, lower bushing and keys with a rag and isopropyl alcohol.
8. Grease the upper and lower tube sliding surfaces.
 - a. Sliding surfaces: Adequately coat with a thick layer of grease.
 - b. Above the upper bushing: Use a thin layer of grease to lubricate the seal.
9. Reassemble the upper and lower tube.

NOTE: Make sure the keys are in the slots in the upper tube and the logo on the lower tube is oriented toward the rear of the post.

10. Torque the collar locking ring on the lower tube to 3-5Nm.
11. Install the cartridge and actuator and torque to **5Nm**.
12. Install the upper cartridge mount bolt (6) and torque to **3Nm**.
13. Install the saddle, saddle plates and torque to 9Nm.

Annual – Complete chassis overhaul

1. Record the saddle position prior to removal.
2. Remove the saddle clamps from the seat post head.
3. Remove the upper cartridge mount bolt.
4. With the post upside down, turn the actuator counter-clockwise to remove it and the cartridge.
5. Turn the collar locking ring counter-clockwise to release it from the lower tube.
6. Slide off the lower tube and clean out old the grease with a rag and isopropyl alcohol.
7. Clean the upper tube.
8. Remove the lower bushing, keys, upper bushing, and collar locking ring with the seal.
9. Clean the tube with a rag and isopropyl alcohol.
10. Remove the seal from the collar locking ring.
11. Thread the collar locking ring onto the lower tube to hold the mid collar. At the same time, use a tire lever to remove the old seal.
12. Press the new seal into the collar locking ring.
13. Install the collar locking ring and seal (from step 9), upper bushing, lower bushing, and keys.
14. Grease the upper and lower tube sliding surfaces.
 - a. Sliding surfaces: Adequately coat with a thick layer of grease.
 - b. Above the upper bushing: Use a thin layer of grease to lubricate the seal.
15. Reassemble the upper and lower tube

NOTE: Make sure the keys are in the slots in the upper tube and the logo on the lower tube is oriented toward the rear of the post.

16. Torque the collar locking ring on the lower tube to 3-5Nm.
17. Install the cartridge and actuator and torque to **5Nm**.
18. Install the upper cartridge mount bolt and torque to **3Nm**.

BONTRAGER

Cartridge replacement

1. Remove the saddle clamps from seat post head.
2. Remove the upper cartridge mount bolt.
3. With the post upside down, turn the actuator counter-clockwise to remove it and the cartridge from the post.
4. Turn the actuator counter-clockwise to remove it and the cartridge mounting nut from the cartridge.
5. Install the cartridge mounting nut and actuator onto the cartridge and torque to **2Nm**.
6. Install the cartridge and actuator and torque to **5Nm**.
7. Install the upper cartridge mount bolt and torque to **3Nm**.

Line troubleshooting

Potential Problem: Depressing the handlebar lever will not activate the seat post.

Potential Solution: Turn the inline adjuster to adjust the cable tension.

Potential Solution: Replace the cable and housing.

Potential Problem: Post will not maintain desired height.

Potential Solution: Replace the cartridge.

Potential Problem: The seat post has excessive movement front to back.

Potential Solution: Torque the locking collar to 5 Nm.

Potential Solution: Replace the bushings.

Potential Solution: Perform a complete overhaul service, replace bushings.

Potential Problem: The seat post has excessive movement side to side.

Potential Solution: Perform a complete overhaul service, replace keys.

BONTRAGER

Dropper lever assembly

