

2013 SPRING ARRIVALS

# THIS JUST IN

67 NEW STYLES  
6 EXCEPTIONAL  
BRANDS

SANMAR®

THIS  
JUST  
IN  
NEW

LOOKS FOR WORK & PLAY

TRAVEL  
*must*  
HAVES

COLOR  
DEPTH  
&  
VALUE

TEAM  
BUILDING  
ESSENTIALS

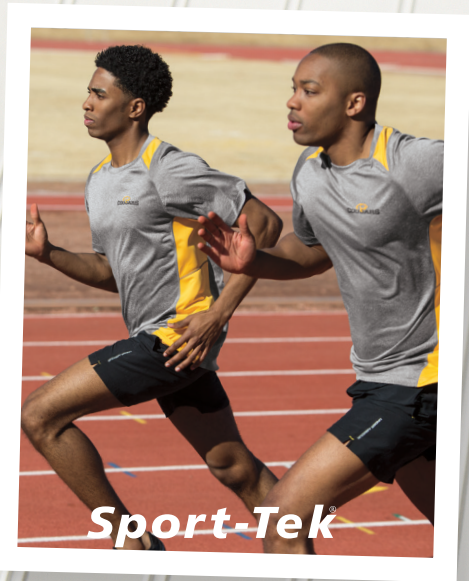
*fashion*

FORWARD BASICS

Eddie Bauer, the owner of the EDDIE BAUER and FIRST ASCENT trademarks, reserves the right to prohibit the addition to any Eddie Bauer/First Ascent product of any mark, name, design or logo that does not meet the high standards of the brand. Please contact your sales representative with questions. First Ascent® and the Eddie Bauer logos are the registered trademarks of Eddie Bauer Licensing Services LLC. These products may not be resold without embellishment.

To protect its reputation and identity, Nike reserves the right to prohibit the addition to any Nike garment of any trademark, name, design or logo of an organization, business, school or team (or for an individual or other entity) that does not meet certain standards. Please contact your representative for any questions. The decoration of any Nike garment with the proprietary mark, name or logo of any professional college institution without the prior written authorization of both the owner of such mark, name or logo and/or Nike is expressly prohibited. These products may not be resold without embellishment.

OGIO products may not be resold without embellishment.



## INSIDE

WOVEN SHIRTS.....	4
POLOS/KNITS.....	12-25, 28-33, 41-47
T-SHIRTS/ACTIVE.....	26, 34-37
SWEATSHIRTS.....	38
CAPS.....	48
BAGS.....	52



**NEW. EDDIE BAUER®  
LONG SLEEVE PERFORMANCE  
TRAVEL SHIRT**

Wherever adventure takes you, this shirt will perform. It combats moisture and offers UPF 50+ protection from the sun. Microban® technology minimizes odors.

- 2.3-ounce, 100% polyester ripstop
- Vertical zippered chest pockets
- Roll sleeves with button tabs
- Shaped sleeve cuffs

ADULT SIZES: XS-4XL  
**EB604**

**UPF 50 SUN PROTECTION**  
**MOISTURE-WICKING**  
**ODOR-FIGHTING**

TRAVEL IN **COMFORT**

GULF TEAL

DRIFTWOOD

BLACK



**NEW. EDDIE BAUER®  
PERFORMANCE FISHING SHIRTS**

Defend yourself from the sun, sweat and odors in our high-performance fishing shirt. This outdoor-ready style offers UPF 50+ protection and a moisture control system that actively moves moisture away from your body to keep you cool, dry and comfortable. Microban® technology minimizes odors.

- 2.3-ounce, 100% polyester ripstop
- 100% polyester mesh upper back lining
- Sun shield collar
- Hook and loop fastened collar points
- Built-in rod holder
- Two large fly box pockets with hook and loop closures
- Zippered chest pocket
- Utility loop and tool holder
- Cape back with mesh ventilation

**LONG SLEEVE PERFORMANCE FISHING SHIRT**

- Roll sleeves with button tabs

ADULT SIZES: XS-4XL

**EB600**

**SHORT SLEEVE PERFORMANCE FISHING SHIRT**

ADULT SIZES: XS-4XL

**EB602**



*Sun shield collar*

**UPF 50 SUN PROTECTION**

**MOISTURE-WICKING**

**ODOR-FIGHTING**



**GULF TEAL**

**WHITE**

**DRIFTWOOD**

**BOULDER**

**NEW. EDDIE BAUER® FISHING SHIRTS**

Designed with the needs of fishermen in mind—but equally comfortable anywhere—this shirt has all the bells and whistles: a built-in rod holder, two large fly box pockets, utility loop and more.

- 3.5-ounce, 100% cotton poplin
- 100% polyester mesh upper back lining
- Hook and loop fastened collar points
- Built-in rod holder
- Two large fly box pockets with hook and loop closures
- Zippered chest pocket
- Utility loop and tool holder
- Cape back with mesh ventilation

**LONG SLEEVE FISHING SHIRT**

- Roll sleeves with button tabs

ADULT SIZES: XS–4XL

**EB606**

**SHORT SLEEVE FISHING SHIRT**

ADULT SIZES: XS–4XL

**EB608**



**COTTON COMFORT**  
**BACK VENTILATION**  
**ADJUSTABLE SLEEVE LENGTH ON LONG SLEEVE STYLE**



**NEW. PORT AUTHORITY®  
STAIN-RESISTANT TWILL  
SHIRTS**

Perfect for uniforming, the soil-release finish helps maintain a spotless, professional look. Epaulets give this colorfast shirt contemporary, military-inspired style.

- 4.5-ounce, 55/45 cotton/poly with soil-release finish
- Center back pleat
- Button-down chest pockets with flap and pleat details
- Epaulets at shoulder seams
- Dyed-to-match buttons
- Shirrtail hem

**STAIN-RESISTANT ROLL SLEEVE  
TWILL SHIRT**

- Pen holder at left pocket
- Roll sleeves with button tabs
- Adjustable, button-through sleeve plackets

ADULT SIZES: XS-4XL  
**\$649**

**LADIES STAIN-RESISTANT ROLL  
SLEEVE TWILL SHIRT**

- Gently contoured silhouette
- 7-button placket to reduce gaping
- Front princess seams
- Roll sleeves with button tabs
- Adjustable, button-through sleeve plackets

LADIES SIZES: XS-4XL  
**L649**

**STAIN-RESISTANT SHORT SLEEVE  
TWILL SHIRT**

- Pen holder at left pocket

ADULT SIZES: XS-4XL  
**\$648**



**STAIN RELEASE  
FOR A SPOTLESS,  
PROFESSIONAL LOOK**

# ROLL UP YOUR **SLEEVES & WORK**

PORT | AUTHORITY®

ULTRA BLUE

STEEL GREY

BASIL GREEN

VINTAGE KHAKI

WHITE

BLACK





**NEW. PORT AUTHORITY® FINE STRIPE STRETCH POPLIN SHIRTS**

A fine stripe pattern and a stretchable blend make this modern poplin shirt a true workplace asset. Bias-cut details accentuate this always-professional look.

- 3.4-ounce, 67/30/3 cotton/poly/spandex
- Open collar
- Bias-cut details inside collar stand and under cuffs
- Durable, impact-resistant buttons
- Adjustable, button-through sleeve plackets
- Shirrtail hem

**FINE STRIPE STRETCH POPLIN SHIRT**

• Outside back pleats  
 ADULT SIZES: XS-4XL  
**S647**

**LADIES FINE STRIPE STRETCH POPLIN SHIRT**

• Gently contoured silhouette  
 • 7-button placket to reduce gaping  
 • Bust darts  
 • Back princess seams  
 LADIES SIZES: XS-4XL  
**L647**

**SPANDEX FOR ENHANCED MOVEMENT**  
**WRINKLE-RESISTANT BLEND**  
**LONG-LASTING COLOR**



WINTERGREEN/WHITE

MOONLIGHT BLUE/WHITE

AUBERGINE PURPLE/WHITE

BLACK/WHITE

**NEW. PORT AUTHORITY® STRETCH POPLIN SHIRTS**

With a touch of spandex for enhanced movement, this wrinkle-resistant poplin style stretches and moves with you as you go about your workday. Vibrant, long-lasting color makes it a go-to choice for today's uniforming needs.

- 3.4-ounce, 67/30/3 cotton/poly/spandex
- Open collar
- Durable, impact-resistant buttons
- Adjustable, button-through sleeve plackets
- Shirttail hem

**STRETCH POPLIN SHIRT**

- Outside back pleats
- ADULT SIZES: XS-4XL  
**S646**

**LADIES STRETCH POPLIN SHIRT**

- Gently contoured silhouette
  - 7-button placket to reduce gaping
  - Bust darts
  - Back princess seams
  - Shaping at waist
- LADIES SIZES: XS-4XL  
**L646**



DARK TEAL

MOONLIGHT BLUE

WINTERGREEN

WHITE

PINK BLOOM  
L646 ONLY

AUBERGINE PURPLE

GREY SMOKE

BLACK



**A TAILORED  
LOOK WITH  
STRETCH FOR  
MOVEMENT**



**NEW. PORT AUTHORITY®  
ULTRA STRETCH POLOS**

We took the classic polo and added a lot of stretch for ease and movement. An extra soft hand, a superb drape and a wrinkle-resistant blend make this polo ideal for the workplace or weekend. This shirt also handles moisture for true performance.

- 3.7-ounce, 92/8 poly/spandex
- Self-fabric collar
- Open hem sleeves

**ULTRA STRETCH POCKET POLO**

- 4-button placket with dyed-to-match buttons
- Welt chest pocket
- Double-needle stitch detail at back seams
- Double-needle sleeves and hem

ADULT SIZES: XS-4XL

**S650**

**LADIES ULTRA STRETCH POLO**

- Gently contoured silhouette
- 5-button placket with dyed-to-match buttons
- Open cuff sleeves
- Front princess seams
- Shaping at waist

LADIES SIZES: XS-4XL

**L650**

**THE CRISP LOOK OF A  
TAILORED FABRIC**

**SPANDEX FOR ENHANCED  
MOVEMENT**

**EASY TO CARE FOR**

**WRINKLE-RESISTANT**

**MOISTURE-WICKING**



THE POLO:  
**REDEFINED**

REGATTA BLUE

SLATE GREY

BLACK

PORT|AUTHORITY

# NEW SILK TOUCH PERFORMANCE

A *new*  
LEGEND

NOW WORKING  
EVEN HARDER

- > **GREAT VALUE**
- > **SNAG-RESISTANT**
- > **MOISTURE-WICKING**
- > **POSICHARGE™ TECHNOLOGY  
FOR OPTIMAL PRINTABILITY,  
ENDURING COLOR**
- > **16 VIBRANT COLORS**

WHITE

NEON YELLOW

LIME

NEON ORANGE

CAROLINA BLUE

PINK RASPBERRY

RED

BRILLIANT BLUE

TEAL GREEN

ROYAL

NAVY

STEEL GREY

BRIGHT PURPLE

MAROON

DARK GREEN

BLACK

# PORT | AUTHORITY®

## **NEW. PORT AUTHORITY® SILK TOUCH™ PERFORMANCE POLOS**

We took our legendary Silk Touch Polo and made it work even harder. The durable Silk Touch Performance Polo wicks moisture, resists snags and, thanks to PosiCharge™ technology, holds onto its color for a professional look that lasts. There's just no higher performing polo at this price!

- 3.9-ounce, 100% cationic polyester double knit
- Self-fabric collar
- Set in, open cuff sleeves
- Double-needle sleeve cuffs and hem

### **SILK TOUCH™ PERFORMANCE POLO**

- 3-button placket with dyed-to-match buttons

ADULT SIZES: XS-4XL

**K540**

### **LADIES SILK TOUCH™ PERFORMANCE POLO**

- Gently contoured silhouette
- V-neck with Johnny collar

LADIES SIZES: XS-4XL

**L540**

### **YOUTH SILK TOUCH™ PERFORMANCE POLO**

- 3-button placket with dyed-to-match buttons

YOUTH SIZES: XS(4), S(6-8), M(10-12),

L(14-16), XL(18-20)

**Y540**

## **TAG FREE**



# TRUE PERFORMER

- > **GREAT VALUE**
- > **SNAG-RESISTANT**
- > **MOISTURE-WICKING**
- > **POSICHARGE™ TECHNOLOGY FOR OPTIMAL PRINTABILITY, ENDURING COLOR**
- > **16 VIBRANT COLORS**



## **NEW. PORT AUTHORITY® STRETCH PIQUE POLOS**

Stretch your wardrobe options with this breathable polo that features a touch of spandex for easy movement. A fluid drape and clean-finished details give this polo an upscale look while our finishing wash adds extra softness.

- 5.5-ounce, 55/40/5 cotton/poly/spandex
- Flat knit collar
- Back yoke with double-needle details
- Side vents

### **STRETCH PIQUE POLO**

- 3-button placket with dyed-to-match buttons
- Flat knit cuffs

ADULT SIZES: XS-4XL

**K555**

### **LADIES STRETCH PIQUE POLO**

- Gently contoured silhouette
- 6-button placket with dyed-to-match buttons
- Flat knit cuffs with notch detail

LADIES SIZES: XS-4XL

**L555**



## **NEW. PORT AUTHORITY® LADIES STRETCH PIQUE BUTTON- FRONT SHIRT**

Our feminine shirt is an easy moving choice for everyday wear. A fashionable drop shoulder, open Y-neck and roll sleeves with button tabs give this breathable style a modern look. Our finishing wash enhances the softness.

- 5.5-ounce, 55/40/5 cotton/poly/spandex
- Gently contoured silhouette
- Self-fabric button-down collar
- Full button placket with dyed-to-match buttons
- Shirt tail hem

LADIES SIZES: XS-4XL

**L556**

### **L556 COLORS AVAILABLE:**

White, Grey Smoke, Black, Moonlight Blue, Pink Bloom

UPSCALE LOOK

EASY MOVING  
STRETCH

BREATHABLE

EXTRA SOFT

FLUID DRAPE

# CLASSIC PIQUE KNIT WITH MODERN STRETCH

WINTERGREEN

WHITE

GREY SMOKE

CHILI RED

AUBERGINE PURPLE

DRESS BLUE NAVY

BLACK

MOONLIGHT BLUE

PINK BLOOM



# MODERN STYLE MOISTURE-WICKING PERFORMANCE

## **NEW. PORT AUTHORITY® TECH EMBOSSSED POLOS**

The traditional argyle—with a modern, techie twist. Variegated diamonds are subtly embossed on the front only of this solid, moisture-wicking polo to provide eye-catching pattern and contrast. This sporty option is perfect for tone-on-tone embellishment.

- 6.5-ounce, 100% polyester
- Open hem sleeves
- Double-needle sleeves and hem
- Side vents

### **TECH EMBOSSSED POLO**

- 3-button placket with dyed-to-match buttons
- Flat knit collar

ADULT SIZES: XS–4XL

**K548**

### **LADIES TECH EMBOSSSED POLO**

- Gently contoured silhouette
- Self-fabric V-neck Johnny collar
- Back yoke detail

LADIES SIZES: XS–4XL

**L548**



REGAL RED

BERMUDA PURPLE

JUNIPER GREEN

POSEIDON BLUE

GRAPHITE

BLACK





PORT | AUTHORITY®

ULTRAMARINE BLUE/NAVY

WHITE/BLACK

DARK GREEN/BLACK

STEEL GREY/BLACK

ROYAL/BLACK

RED/BLACK

**NEW. PORT AUTHORITY® SILK TOUCH™ COLORBLOCK POLOS**

We gave our uniforming favorite an updated look with a contrasting front, black buttons and a solid black back. (Navy buttons and solid navy back on Ultramarine Blue). But we didn't tamper with perfection: same silky softness and wrinkle resistance.

- 5-ounce, 65/35 poly/cotton pique
- Self-fabric collar
- Buttons match underside of placket
- Side vents

**SILK TOUCH™ COLORBLOCK POLO**

- 3-button placket
- Open hem sleeves
- Double-needle sleeves and hem

ADULT SIZES: XS-4XL  
**K529**

**LADIES SILK TOUCH™ COLORBLOCK POLO**

- Gently contoured silhouette
- 6-button placket
- Half sleeves with open cuffs
- Double-needle hem

LADIES SIZES: XS-4XL  
**L529**



A.



B.



C.

**A. NEW. PORT AUTHORITY® LADIES CONCEPT DOLMAN SLEEVE SHIRT**

With a flattering fit for all body types, this amazingly soft top has a drop shoulder with dolman sleeves and soft gathers at the hip.

- 4.4-ounce, 62/33/5 poly/rayon/spandex
- Tag-free label
- Scoop neck
- 3/4 sleeves
- Double-needle hem

LADIES SIZES: XS-4XL

**L544**

**B. NEW. PORT AUTHORITY® LADIES CONCEPT CARDIGAN**

A piece her wardrobe should not be without: a soft, versatile cardigan to layer with a favorite tee or tank. Ours has a wide hem and cuffs for a streamlined look.

- 4.4-ounce, 62/33/5 poly/rayon/spandex
- Tag-free label
- Open Y-neck
- 9-button cardigan placket with dyed-to-match buttons

LADIES SIZES: XS-4XL

**L545**

**C. NEW. PORT AUTHORITY® LADIES CONCEPT TANK**

Our tank has gathers at the neckline and easily mixes and matches with other Ladies Concept styles. The soft styling provides a flattering fit for all body types.

- 4.4-ounce, 62/33/5 poly/rayon/spandex
- Tag-free label
- Double-needle hem

LADIES SIZES: XS-4XL

**L546**



# 3 NEW CONCEPTS FOR HER

MOONLIGHT BLUE  
NOT AVAILABLE IN TANK

GREY SMOKE

PURPLE POTION  
NOT AVAILABLE IN TANK OR CARDIGAN

BLACK

**NEW. PORT & COMPANY®  
ESSENTIAL RING SPUN COTTON  
T-SHIRTS**

Soon to be your new favorite tee. Discover the extra soft difference 100% ring spun cotton makes in this finer, smooth-faced and durable must-have tee.

- 5.5-ounce, 100% ring spun cotton (preshrunk)
- Removable tag for comfort and relabeling
- Shoulder-to-shoulder taping
- Set-in collar
- Double-needle sleeves and hem

**ESSENTIAL RING SPUN  
COTTON T-SHIRT**  
ADULT SIZES: S-4XL  
**PCI50**

**LADIES ESSENTIAL RING SPUN  
COTTON T-SHIRT**

- Side seamed
- LADIES SIZES: XS-4XL  
**LPCI50**

RED

CARDINAL  
ADULT ONLY

ATHLETIC HEATHER

ORANGE SHERBET  
ADULT ONLY

YELLOW  
ADULT ONLY

WHITE

CORAL  
LADIES ONLY

CANDY PINK

RASPBERRY  
LADIES ONLY

SANGRIA

DARK GREEN  
ADULT ONLY

OLIVE  
ADULT ONLY

LIME

CLOVER GREEN  
ADULT ONLY

TURQUOISE  
ADULT ONLY

AQUATIC BLUE

SAND  
ADULT ONLY

NAVY

ROYAL

SILVER  
ADULT ONLY

CHARCOAL

PURPLE  
ADULT ONLY

EGGPLANT  
ADULT ONLY

JET BLACK

# SUMPTUOUS SOFTNESS FROM RING SPUN COTTON

**Sport-Tek®**



**NEW. SPORT-TEK® POSICHARGE MICRO-MESH™ POLOS**

This polo performs big with moisture wicking and odor control protection. PosiCharge technology helps logos and colors endure, while snag resistance helps preserve its clean look.

- 4-ounce, 100% cationic polyester double mesh
- Sport-Tek logo neck taping
- Tag-free label
- Set-in, open hem sleeves

**POSICHARGE MICRO-MESH™ POLO**

- Flat knit collar
- 3-button placket with dyed-to-match buttons
- Triple-needle yoke and armholes
- Side vents

ADULT SIZES: XS-4XL

**ST680**

**LADIES POSICHARGE MICRO-MESH™ POLO**

- Self-fabric collar
- 3-button Y-placket with dyed-to-match buttons

LADIES SIZES: XS-4XL

**LST680**

- > **SNAG-RESISTANT**
- > **ODOR-FIGHTING**
- > **MOISTURE-WICKING**
- > **ENDURING COLOR**
- > **OPTIMAL PRINTABILITY**
- > **PARTIALLY MADE FROM RECYCLED COFFEE GROUNDS**

# MAXIMUM PERFORMANCE FROM NEW POSICHARGE MICRO-MESH

## ST680

11 COLOR CHOICES

## LST680

12 COLOR CHOICES



WHITE



TRUE RED



CITRON



BLUE WAKE



CAROLINA BLUE



TRUE ROYAL



TRUE NAVY



MAROON



FOREST GREEN



IRON GREY



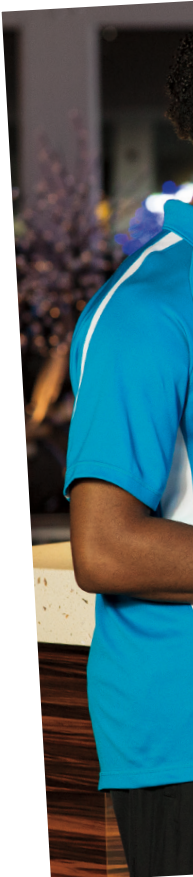
BLACK



PINK RUSH  
LST680 ONLY

# MICRO-MESH MEANS MAXIMUM BENEFITS

- > **SNAG-RESISTANT**
- > **ODOR-FIGHTING**
- > **MOISTURE-WICKING**
- > **ENDURING COLOR**
- > **OPTIMAL PRINTABILITY**
- > **PARTIALLY MADE FROM  
RECYCLED COFFEE GROUNDS**





TRUE RED/  
WHITE



BLUE WAKE/  
WHITE



TRUE ROYAL/  
WHITE



TRUE NAVY/  
WHITE



MAROON/  
WHITE



FOREST GREEN/  
WHITE



IRON GREY/  
WHITE



BLACK/  
WHITE



BLACK/  
TRUE RED



PINK RUSH/  
WHITE  
LST685 ONLY



**ST680**

11 COLOR CHOICES

**LST680**

12 COLOR CHOICES

**NEW. SPORT-TEK® POSICHARGE MICRO-MESH™ COLORBLOCK POLOS**

Eye-catching colorblocking on the shoulders, sleeves and sides makes this versatile, snag-resistant polo a winner. PosiCharge Micro-Mesh ensures lasting color, while this style performs with moisture wicking and odor control protection.

- 4-ounce, 100% cationic polyester double mesh
- Self-fabric collar
- Sport-Tek logo neck taping
- Tag-free label
- Raglan, open hem sleeves

**POSICHARGE MICRO-MESH™ COLORBLOCK POLO**

- 3-button placket with dyed-to-match buttons
- ADULT SIZES: XS-4XL

**ST685**

**LADIES POSICHARGE MICRO-MESH™ COLORBLOCK POLO**

- 5-button placket with dyed-to-match buttons
- LADIES SIZES: XS-4XL

**LST685**

**Sport-Tek®**



**NEW. SPORT-TEK® ACTIVE TEXTURED POLOS**

Subtle texture adds character to this sporty polo while it performs with cooling moisture wicking. Plus, your look and logo remains looking strong—thanks to our snag-resistant fabric.

- 3.4-ounce, 100% cationic polyester mesh
- Tag-free label
- Set-in, open hem sleeves
- Double-needle sleeves and hem
- Side vents

**ACTIVE TEXTURED POLO**

- Self-fabric collar
- 3-button placket with dyed-to-match buttons

ADULT SIZES: XS–4XL

**ST690**

**LADIES ACTIVE TEXTURED POLO**

- Open placket, self-fabric Johnny collar

LADIES SIZES: XS–4XL

**LST690**

- > **SUBTLE TEXTURE**
- > **GREAT VALUE**
- > **OPTIMAL PRINTABILITY**
- > **ENDURING COLOR**
- > **MOISTURE-WICKING**
- > **SNAG-RESISTANT**

# A HIGH PERFORMER AT A LOW PRICE

ST690 + LST690  
11 COLOR CHOICES





VINTAGE  
HEATHER

TRUE ROYAL  
HEATHER

BLUE WAKE  
HEATHER

COBALT  
HEATHER

DEEP ORANGE  
HEATHER

# OUR NEW CONTENDER STEPS UP



SCARLET  
HEATHER

CARDINAL  
HEATHER

TURF GREEN  
HEATHER

FOREST GREEN  
HEATHER

PURPLE  
HEATHER



TRUE NAVY  
HEATHER

PINK RASPBERRY  
HEATHER  
LST360 ONLY

**ST360**  
11 COLOR CHOICES

**LST360**  
12 COLOR CHOICES

## NEW. SPORT-TEK® HEATHER CONTENDER TEES

Bring on the competition. This value-priced, ultra-breathable tee takes on any activity with sweat-wicking performance and heathered good looks.

- 3.8-ounce, 100% polyester jersey
- Removable tag for comfort and relabeling
- Set-in, open hem sleeves
- Double-needle sleeves and hem

### HEATHER CONTENDER TEE

ADULT SIZES: XS-4XL

**ST360**

### LADIES HEATHER CONTENDER SCOOP NECK TEE

- Gently contoured silhouette

LADIES SIZES: XS-4XL

**LST360**

Due to the nature of 100% polyester performance fabrics, special care must be taken throughout the printing process.

**NEW. SPORT-TEK® HEATHER COLORBLOCK CONTENDER TEE**

Color pops at the neck and sides make this heathered tee extra sporty—and it doesn't shy away from performance, either, with exceptional moisture wicking and breathability. Plus, it's a tremendous value.

- 3.8-ounce, 100% polyester jersey
- 3.8-ounce, 100% polyester interlock panels
- Flatlock stitching throughout
- Removable tag for comfort and relabeling
- Raglan, open hem sleeves
- Double-needle sleeves and hem

ADULT SIZES: XS-4XL

**ST361**



**ST361**

8 COLOR CHOICES



VINTAGE HEATHER/  
GOLD

VINTAGE HEATHER/  
TRUE RED

VINTAGE HEATHER/  
TRUE ROYAL

VINTAGE HEATHER/  
TRUE NAVY

VINTAGE HEATHER/  
PURPLE

VINTAGE HEATHER/  
FOREST GREEN

VINTAGE HEATHER/  
MAROON

VINTAGE HEATHER/  
BLACK

# BRING ON THE COMPETITION

- > SWEAT-WICKING
- > BREATHABLE
- > GREAT VALUE
- > 16 SPIRITED COLORS



## ST361

8 COLOR CHOICES

### NEW. SPORT-TEK® COLORBLOCK COMPETITOR™ TEES

We took our popular Competitor Tee and added some attitude with colorblocking on the shoulders, sleeves and sides. The result? An even more colorful, sweat-controlling, breathable tee that's easy on the budget.

- 3.8-ounce, 100% polyester interlock
- Removable tag for comfort and relabeling
- Raglan, open hem sleeves

### COLORBLOCK COMPETITOR™ TEE

ADULT SIZES: XS-4XL

### ST351

### LADIES COLORBLOCK COMPETITOR™ TEE

- Gently contoured silhouette

LADIES SIZES: XS-4XL

### LST351

Due to the nature of 100% polyester performance fabrics, special care must be taken throughout the printing process.



**NEW. SPORT-TEK® SLEEVELESS COMPETITOR™ TEES**

Our popular sweat-wicking, breathable tee—now available without sleeves for an even more athletic look and easier movement. And, as always, it's a real value.

- 3.8-ounce, 100% polyester interlock
- Removable tag for comfort and relabeling
- Double-needle armholes and hem

**SLEEVELESS COMPETITOR™ TEE**

ADULT SIZES: XS–4XL

**ST352**

**LADIES SLEEVELESS COMPETITOR™ V-NECK TEE**

- Gently contoured silhouette
- Self-fabric v-neck

LADIES SIZES: XS–4XL

**LST352**



WHITE SILVER TRUE RED TRUE ROYAL TRUE NAVY LIME SHOCK BLACK



WHITE SILVER TRUE RED TRUE ROYAL TRUE NAVY LIME SHOCK BLACK

**ST352 + LST352**

7 COLOR CHOICES

**NEW. SPORT-TEK® LADIES CADENCE SHORT**

For training or relaxing, our feminine short keeps pace with high-performance moisture control. Tricot side panels provide breathability and add athletic style.

- 2.3-ounce, 100% polyester body
- 3.8-ounce, 100% polyester tricot side panels
- 2.8-ounce, 100% polyester crepe jersey liner
- Tag-free label
- Elastic waistband with drawcord
- 3.25-inch inseam
- Internal pocket for keys and small items

LADIES SIZES: XS–4XL

**LST304**

**LST304**  
10 COLOR CHOICES



# HIGH TECH HIGH PERFORMANCE

**NEW. SPORT-TEK®  
COLORBLOCK TECH FLEECE  
1/4-ZIP HOODED SWEATSHIRT**

Colorblocking on the hood, shoulders and arms provide striking contrast against the rich, heather body color of this sweat-wicking essential. Double-knit construction, a full athletic cut and enduring color means it will quickly become a go-to choice for time in the gym or hanging with friends.

- 7-ounce, 100% polyester
- Double-needle stitching throughout
- Taped neck
- Reverse coil zipper
- Raglan sleeves
- Rib knit cuffs and hem
- Front pouch pocket

ADULT SIZES: XS-4XL

**ST249**



> **DOUBLE-KNIT CONSTRUCTION**

> **SWEAT-WICKING**

> **COLORFAST**

Due to the nature of 100% polyester performance fabrics, special care must be taken throughout the printing process.

**ST249**

7 COLOR CHOICES



GRAPHITE  
HEATHER/  
TRUE RED

GRAPHITE  
HEATHER/  
TRUE ROYAL

GRAPHITE  
HEATHER/  
TRUE NAVY

GRAPHITE  
HEATHER/  
FOREST GREEN

GRAPHITE  
HEATHER/  
MAROON

GRAPHITE  
HEATHER/  
PURPLE

GRAPHITE  
HEATHER/  
BLACK



CAROLINA BLUE/  
WHITE



TRUE RED/  
WHITE



TRUE RED/BLACK  
ADULT ONLY



TRUE ROYAL/  
WHITE



TRUE NAVY/  
WHITE



TRUE NAVY/  
GOLD



FOREST GREEN/  
WHITE



MAROON/  
WHITE



VINTAGE  
HEATHER/  
BLACK

**NEW. SPORT-TEK® SLEEVE STRIPE PULLOVER HOODED SWEATSHIRTS**

Athletic colorblocking on the shoulders and sleeves make this sweatshirt a fan or team favorite. With a comfortable cut for movement, it also resists color fading and shrinkage.

- 9-ounce, 65/35 cotton/poly
- Jersey-taped neck
- Raglan sleeves
- Rib knit cuffs and waistband
- Front pouch pocket

**SLEEVE STRIPE PULLOVER HOODED SWEATSHIRT**

- Dyed-to-match drawcord
- ADULT SIZES: XS-4XL

**ST265**

**YOUTH SLEEVE STRIPE PULLOVER HOODED SWEATSHIRT**

- No drawcord at hood
- YOUTH SIZES: XS(4), S(6-8), M(10-12), L(14-16), XL(18-20)

**YST265**

**ST265**

13 COLOR CHOICES

**YST265**

11 COLOR CHOICES



PURPLE/  
WHITE



BLACK/  
WHITE



BLACK/  
GOLD



BLACK/  
DEEP ORANGE  
ADULT ONLY



SLEEK  
**MODERN**  
DESIGN



**NEW. NIKE GOLF DRI-FIT  
SPORT COLORBLOCK  
POLO**

Colorblocking on the chest challenges the traditional polo, while Dri-FIT moisture management technology helps keep things cool. Features a self-fabric collar, three-button placket and open hem sleeves. The contrast heat transfer Swoosh design trademark is on the right chest. Made of 6-ounce, 100% polyester Dri-FIT fabric.

ADULT SIZES: XS-4XL  
**527806**

BLACK/FLINT GREY/BLACK

LUCKY GREEN/NEUTRAL GREY/BLACK

GAME ROYAL/WHITE/BLACK

NAVY/GYM RED/FLINT GREY



**NEW. NIKE GOLF DRI-FIT GRAPHIC POLO**

Get noticed. Bold heat transfer graphics on the shoulders and Dri-FIT moisture management technology make this polo a sporty, high performer. Design details include a self-fabric collar, three-button placket, open hem sleeves and side vents. The contrast heat transfer Swoosh design trademark is on the center back. Made of 5.4-ounce, 100% polyester Dri-FIT fabric. ADULT SIZES: XS-4XL  
**527807**



WHITE

BLACK

**NEW. NIKE GOLF LADIES LONG SLEEVE DRI-FIT STRETCH TECH POLO**

Dri-FIT moisture management technology and stretch fabric make this long sleeve polo a true performer for her. Tailored for a feminine fit with a self-fabric collar, five-button placket and open cuffs. Heat transfer label for tag-free comfort. Dyed-to-match buttons. Side vents. The contrast Swoosh design trademark is embroidered on the center front, below the placket. Made of 5-ounce, 100% polyester Dri-FIT fabric. LADIES SIZES: S-2XL

**545322**

TEAL SPARK

BLUE RIBBON

DIESEL GREY

PISTON PURPLE


BLACKTOP



**NEW. OGIO® AXLE POLO**

Rebelliously cool, this polo has mad style with its two chest pockets and hidden snaps.

**SPECS**

- OGIO heat transfer label for tag free comfort
- self-fabric collar
- contrast color placket and collar stand
- 4-snap placket with 3 hidden snaps
- front pockets with contrast color under flaps and  debossed metal snaps
- set-in, open hem sleeves
- woven OGIO badge on left sleeve

**MATERIALS**

5-ounce, 100% poly tricot with stay-cool wicking technology

ADULT SIZES: XS-4XL

**OGI13**



PINK ROUGE

TEAL SPARK

BLUE RIBBON

PISTON PURPLE

DIESEL GREY

BLACKTOP

**NEW. OGIO® PEARL POLO**

This polo has razor-sharp attitude with its unique rib side splices, 3/4 sleeves and pockets.

**SPECS**

- OGIO heat transfer label for tag free comfort
- self-fabric collar and open placket
- set-in 3/4 sleeves with self-fabric tabs and debossed buttons
- front pockets with debossed buttons
- pleat at back yoke
- woven OGIO badge at hem

**MATERIALS**

5-ounce, 100% poly tricort with stay-cool wicking technology; 100% poly rib side splices  
LADIES SIZES: XS-4XL

**LOGI15**



**NEW. OGIO® ELIXIR TUNIC**

The cure-all for her tired wardrobe, this tunic features bias-cut details and a playful drawcord waist.

**SPECS**

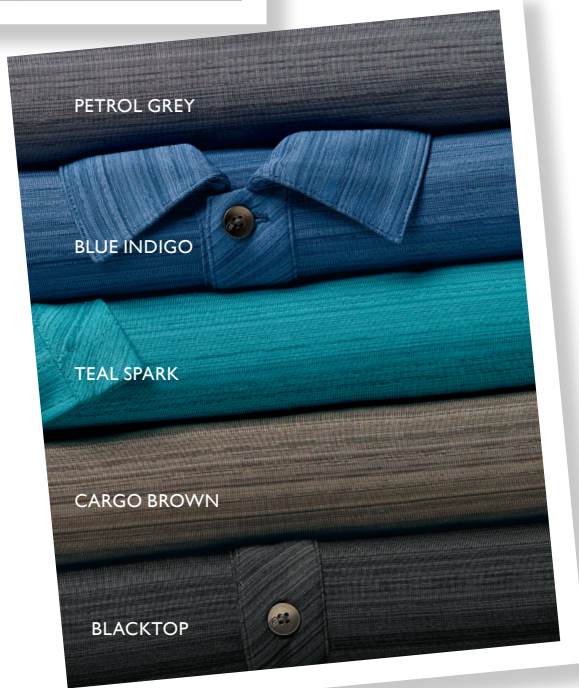
- OGIO heat transfer label for tag free comfort
- self-fabric, bias-cut collar
- 6-button, bias-cut placket with debossed metal buttons
- 3/4 sleeves with ruching
- pleat at back yoke
- self-fabric, bias-cut drawcord tunnel with dyed-to-match drawcord with metal tips
- woven OGIO badge at hem

**MATERIALS**

4.3-ounce, 96/4 poly/spandex jersey with stay-cool wicking technology

LADIES SIZES: XS-4XL

**LOGI18**



**NEW. OGIO® ELIXIR POLO**

Leave it to OGIO to stir up an intoxicating blend of street-ready style with high performance.

**SPECS**

- OGIO heat transfer label for tag free comfort
- self-fabric collar
- 3-button, bias-cut placket with debossed metal buttons
- bias-cut shoulder and sleeve panels
- bias-cut side vents
- woven OGIO badge at hem

**MATERIALS**

4.3-ounce, 96/4 poly/spandex jersey with stay-cool wicking technology


ADULT SIZES: XS-4XL

**OGI16**

**NEW. OGIO® GAZE HENLEY**

This feminine top will receive appreciative gazes thanks to its edgy look.

**SPECS**

- OGIO heat transfer label for tag free comfort
- 3-snap placket with  debossed ring snaps
- set-in sleeves with reverse self-fabric cuffs and  debossed rivets

**MATERIALS**

3.8-ounce, 100% poly double knit with stay-cool wicking technology

LADIES SIZES: XS-4XL

LOG114



**NEW. PORT AUTHORITY®  
PIQUE MESH CAP**

An ultra-breathable trucker-style look—fashioned in pique and mesh—with a stretch fit for comfort.

**Fabric** 100% polyester

**Structure** Structured

**Profile** Low

**ADULT SIZES:** S/M, L/XL

**C826**



WHITE/BLACK

TRUE ROYAL/BLACK

TRUE RED/BLACK

IRON GREY/BLACK

BLACK/BLACK



**NEW. PORT AUTHORITY®  
DOUBLE MESH  
SNAPBACK SANDWICH  
BILL CAP**

Our two-tone mesh design makes this breathable cap stand out. The front panels are black twill, while the mid and back panels layer color under the mesh for an iridescent effect.

**Fabric** 100% cotton twill front panels; 100% polyester mesh mid and back panels

**Structure** Structured

**Profile** High

**Closure** 7-position adjustable snap

**C818**



BLACK/SILVER

BLACK/SHOCK  
GREEN

BLACK/SHOCK PINK

BLACK/RED

BLACK/SHOCK BLUE

**NEW. PORT AUTHORITY®  
DOUBLE STRIPE CAP**

Double stripes complement your logo on this extra soft, vintage-looking cap.

**Fabric** 100% cotton twill

**Structure** Unstructured

**Profile** Low

**Closure** Hook and loop

**C825**



DARK MOCHA/BEIGE

NAVY/LIGHT GREY

DARK GREY/  
LIGHT GREY

BLACK/CHARCOAL

**NEW. PORT AUTHORITY®  
PIGMENT-DYED  
CAMOUFLAGE CAP**

Pigment dyeing the front panels, visor and closure gives this cap an oiled leather look. A popular camo pattern completes the mid and back panels.

**Fabric** 60/40 cotton/poly

**Structure** Unstructured

**Profile** Low

**Closure** Hook and loop

**C819**



MOSSY OAK® INFINITY®



MOSSY OAK® NEW  
BREAK-UP®



REALTREE XTRA®

**NEW. PORT AUTHORITY®  
CAMOUFLAGE VISOR**

Keep a cooler head when you're in the wild with this camouflaged visor.

**Fabric** 60/40 cotton/poly

**Closure** Hook and loop

**C822**



MOSSY OAK® INFINITY®



MOSSY OAK® NEW  
BREAK-UP®



REALTREE XTRA®

**NEW. PORT AUTHORITY®  
EMBROIDERED  
CAMOUFLAGE CAP**

Any outdoorsman will appreciate the embroidered wildlife and camo pattern on this cap.

**Fabric** 60/40 cotton/poly

**Structure** Structured

**Profile** Low

**Closure** Hook and loop

**C820**



REALTREE XTRA®/SEAMOSS/  
PHEASANT



REALTREE ADVANTAGE  
MAX-4®/KHAKI/DUCK



REALTREE ADVANTAGE  
MAX-4®/TAN/BASS



MOSSY OAK®  
INFINITY®/CHOCOLATE/  
ELK



MOSSY OAK® NEW BREAK-UP®/  
TAN/DEER



ORANGE BLAZE/  
DEER



**NEW. NIKE GOLF DRI-FIT SWOOSH FRONT CAP**

The contrast Swoosh design trademark takes front and center on this unstructured, moisture-wicking cap. A low profile, contrast underbill and hook and loop closure complete this sporty design. Made of 5-ounce, 100% Dri-FIT polyester.

**548533**



LUCKY GREEN

GAME ROYAL

ANTHRACITE

BLACK

WHITE

**NEW. NIKE GOLF FLAT BILL CAP**

An ultramodern cap for the street or course with Swoosh Flex for a perfect fit. Features a structured, high profile design with a contrast underbill.

The contrast Swoosh design trademark is embroidered on the front. Made of 83/14/3 nylon/cotton/spandex.

ADULT SIZES: S/M, M/L, L/XL

**548530**



WHITE

BLACK



**NEW. SPORT-TEK® JERSEY FRONT CAP**

Heathered jersey and contrast color give this cap a vintage look.

**Fabric** 65/35 rayon/poly jersey in front panels; 100% cotton twill in back panels and under bill

**Structure** Structured

**Profile** Low

**Closure** Hook and loop

**STCI8**



VINTAGE HEATHER/  
TRUE RED

VINTAGE HEATHER/  
TRUE ROYAL

VINTAGE HEATHER/  
TRUE NAVY

VINTAGE HEATHER/  
FOREST GREEN



VINTAGE HEATHER/  
IRON GREY

VINTAGE HEATHER/  
MAROON

VINTAGE HEATHER/  
PURPLE

VINTAGE HEATHER/  
BLACK

**NEW. SPORT-TEK® FLAT BILL SNAPBACK CAP**

On or off the field, this cap is a perfect choice thanks to its sharp styling and spirited color.

**Fabric** 80/20 acrylic/wool

**Structure** Structured

**Profile** High

**Closure** 7-position adjustable snap

**STCI9**



TRUE ROYAL/  
TRUE RED

TRUE ROYAL/  
GOLD

PURPLE/GOLD

BLACK/GOLD



BLACK/TRUE RED

BLACK/DEEP  
ORANGE

TRUE NAVY

BLACK

# GAME-CHANGING RIVAL BAGS



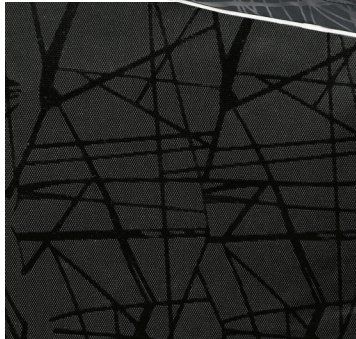
## NEW. SPORT-TEK® RIVAL DUFFELS

Available in two sizes to fit your activity level and lifestyle, our Rival Duffels feature an edgy tonal graphic print and contrast piping for a truly sporty look.

- 100% polyester
- Zippered end pockets with mesh for ventilation
- Interior zippered pocket for small items
- Fabric-wrapped handle
- Detachable, adjustable, padded shoulder strap
- Removable bottom board for reinforcement
- Dimensions: 11.5" h x 24" w x 10.5" d;  
Approx. 2,898 cubic inches (medium);  
12" h x 29" w x 12" d; Approx. 4,176 cubic inches (large)

**BST501 MEDIUM**

**BST502 LARGE**



DEEP ORANGE



TRUE RED



TRUE ROYAL



TRUE NAVY



FOREST GREEN



PURPLE



MAROON



BLACK



**NEW. SPORT-TEK® RIVAL CINCH PACK**

A tonal graphic print gives this cinch pack distinctive character, while front and interior pockets help keep small items organized.

- 100% polyester
- Exterior full-size pouch pocket
- Interior pocket with hook and loop closure
- Black drawcord closure allows this bag to double as a backpack
- Bottom grommets
- Dimensions: 17.5"h x 13.75"w

**BST600**



DEEP ORANGE

TRUE RED

TRUE ROYAL

TRUE NAVY

FOREST GREEN

PURPLE

MAROON

BLACK

Bags not intended for use by children 12 and under. Bags have a hangtag with information on responsible sourcing, product safety and a California Proposition 65 warning.

The following language is found on hangtags for all Sport-Tek® bags.

**ENSURING RESPONSIBLE SOURCING & PRODUCT SAFETY**

Sport-Tek creates quality, safe products in a socially responsible manner consistent with all federal laws and requirements including Consumer Product Safety Commission guidelines and the Consumer Product Safety Improvement Act.

The State of California requires the following statement.

**WARNING:** This product contains a chemical known to the state of California to cause cancer, birth defects or other reproductive harm.

We set high standards for quality and safety in our materials and craftsmanship and have rigorous testing programs to ensure it. We are proud to be a participating member of the Fair Labor Association and we are committed to sourcing our products in a socially responsible way.



ADULT SIZES	XS	S	M	L	XL	2XL	3XL	4XL
REGULAR/TALL CHEST	32-34	35-37	38-40	41-43	44-46	47-49	50-53	54-57
REGULAR/TALL NECK	14½-15	15-15½	15½-16	16-16½	16½-17	17-17½	17½-18	18-18½
REGULAR LONG SLEEVE ARM LENGTH	30½	32	34	35	36½	37½	38½	39½
WAIST	26-28	29-31	32-34	35-37	38-40	41-43	44-47	48-51
INSEAM	30	31	32	32½	33	33½	34	34

LADIES SIZES	XS	S	M	L	XL	XXL	3XL	4XL
SIZE	2	4/6	8/10	12/14	16/18	20/22	24/26	28/30
BUST	32-34	35-36	37-38	39-41	42-44	45-47	48-51	52-55
WAIST	24-26	27-28	29-30	31-33	34-36	37-39	40-43	44-47
HIP	34-36	37-38	39-40	41-43	44-46	47-49	50-53	54-57
INSEAM	30½	31	31½	32	32½	33	33	33

YOUTH SIZES	XS	S	M	L	XL
SIZE	4	6/8	10/12	14/16	18/20
CHEST	25-26	26-28	28-30	30-32	32-34
WAIST	24-25	25-26	26-27	27-28	28-31

ADULT SIZES	XS	S	M	L	XL	2XL	3XL	4XL
CHEST	32-35	35-38	38-41	41-44	44-47	47-50	50-53	53-56

LADIES SIZES	S	M	L	XL	XXL
SIZE	4/6	8/10	12/14	16/18	20
BUST	32-35	35-37¼	37¼-39¼	39¼-42¼	42¼-44¾

ADULT SIZES	XS	S	M	L	XL	2XL	3XL	4XL
CHEST	32-34	35-37	38-40	41-43	44-46	47-49	50-53	54-57

LADIES SIZES	XS	S	M	L	XL	2XL	3XL	4XL
SIZE	2	4/6	8/10	12/14	16/18	20/22	24/26	28/30
BUST	32-34	35-36	37-38	39-41	42-44	45-47	48-51	52-55

ADULT SIZES	XS	S	M	L	XL	2XL	3XL	4XL
CHEST	32-34	35-37	38-40	41-43	44-46	48-50	52-54	55-57

