





Assembly Instructions


CHVIEH HUTCH - VIENNA MERLOT

Thank you for purchasing this quality product. Be sure to check all packing materials carefully for small parts, which may have come loose inside the carton during shipment. Identify and count all parts and compare with the **HARDWARE LIST** below.

Caution: Please read instructions thoroughly before unpacking assembly parts.

1. We recommend that you assemble this product with the assistance of another person; this will make assembly easier, and will help to eliminate damage to the product or injury to persons during assembly.
2. Please do not over tighten screws or bolts until the assembly is completed.
3. Please put all parts on a non-abrasive floor before assembly, and follow the assembly steps to assemble your newly purchased product correctly and efficiently.

NO.		Parts List	Q' TY
A		Server	1
B		Hutch	1
C		Middle glass shelf	2
D		Glass shelf	4

NO.		Hardware List	Q' TY
1		Screws $\Phi 3\text{mm} \times 15\text{L}$	16
		Allen wrench (4mm)	1
		Allen key (4mm)	1
2		Steel connective Plates	2
		$\Phi 5/16" \times 18 \times \frac{3}{4}"\text{L}$ Allen Bolt	4
		$\Phi 5/16" \times \Phi 13\text{mm}$ Spring washer	4
		$\Phi 5/16" \times \Phi 22\text{mm} \times 2\text{mmT}$ Flat washer	4
3		Middle glass shelf pin support	8
4		Glass shelf pin support	16
5		Furniture tipping restraint	1

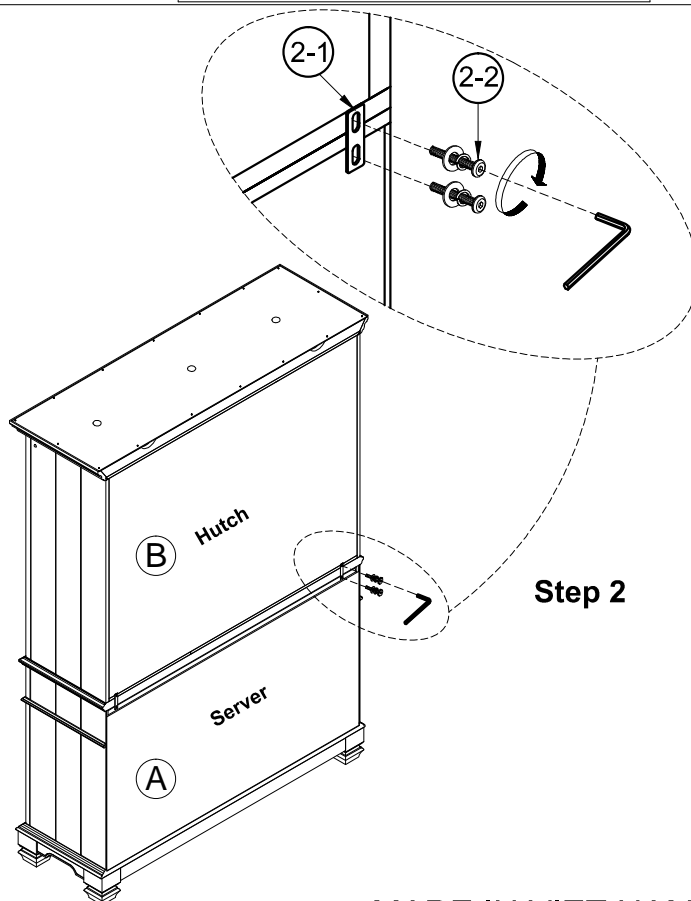
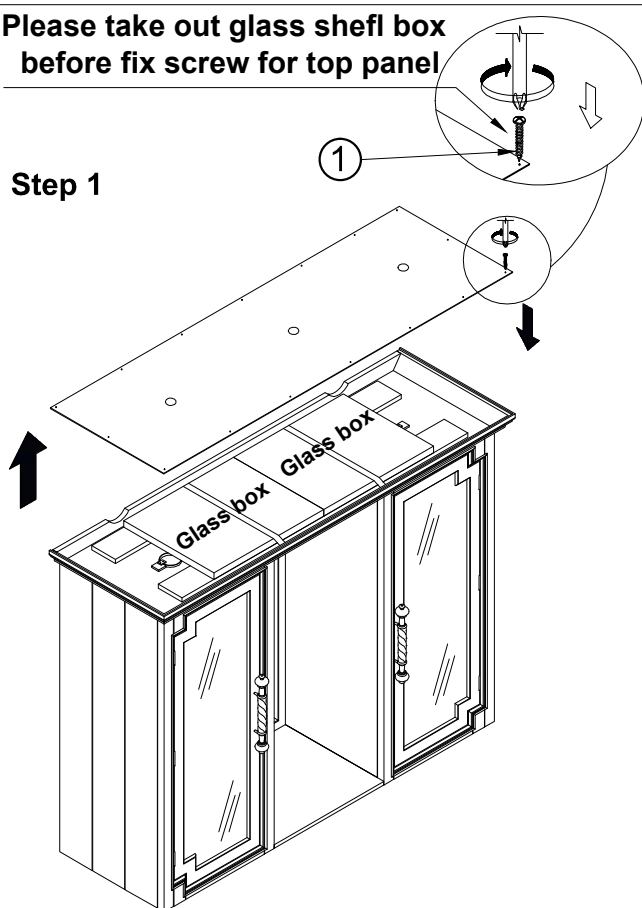
TOOLS REQUIRED (NOT PROVIDED)

PHILLIPS SCREWDRIVER



Please take out glass shelf box before fix screw for top panel

Step 1



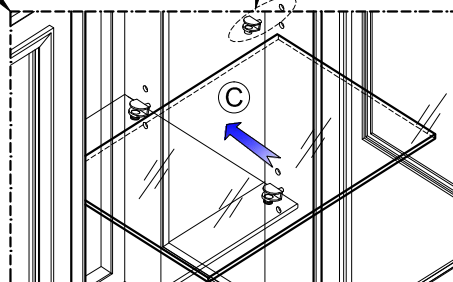
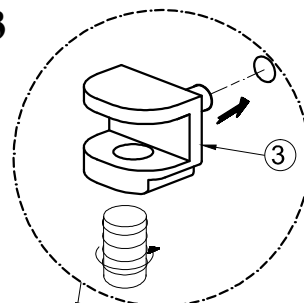
Step 2

MADE IN VIET NAM

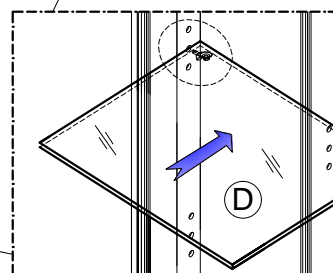
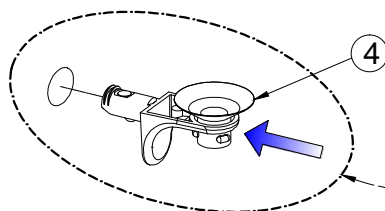
Assembly Instructions

CHVIEH
HUTCH - VIENNA MERLOT

Step 3

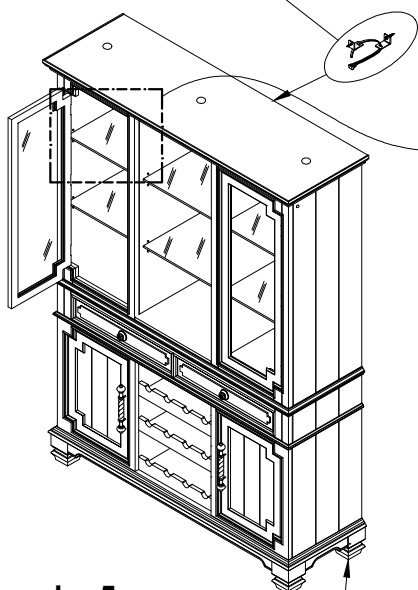
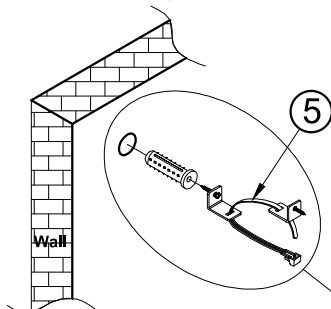


Step 4

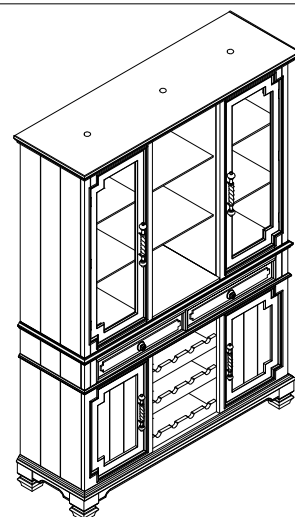


Step 5

**Remark: Tipping hardware
attached to the back stretcher**



Leveler 5pcs
Adjust the levelers until they
are balanced and touching the floor.



Assembly completed
MADE IN VIET NAM