



ASSEMBLY INSTRUCTION

2293 - 774 NIGHT STAND - SULLIVAN WALNUT

Thank you for purchasing this quality product. Be sure to check all packing material carefully for small parts that may have come loose inside the carton during shipment.

TOOLS REQUIRED (NOT PROVIDED):
PHILIPS SCREW DRIVER

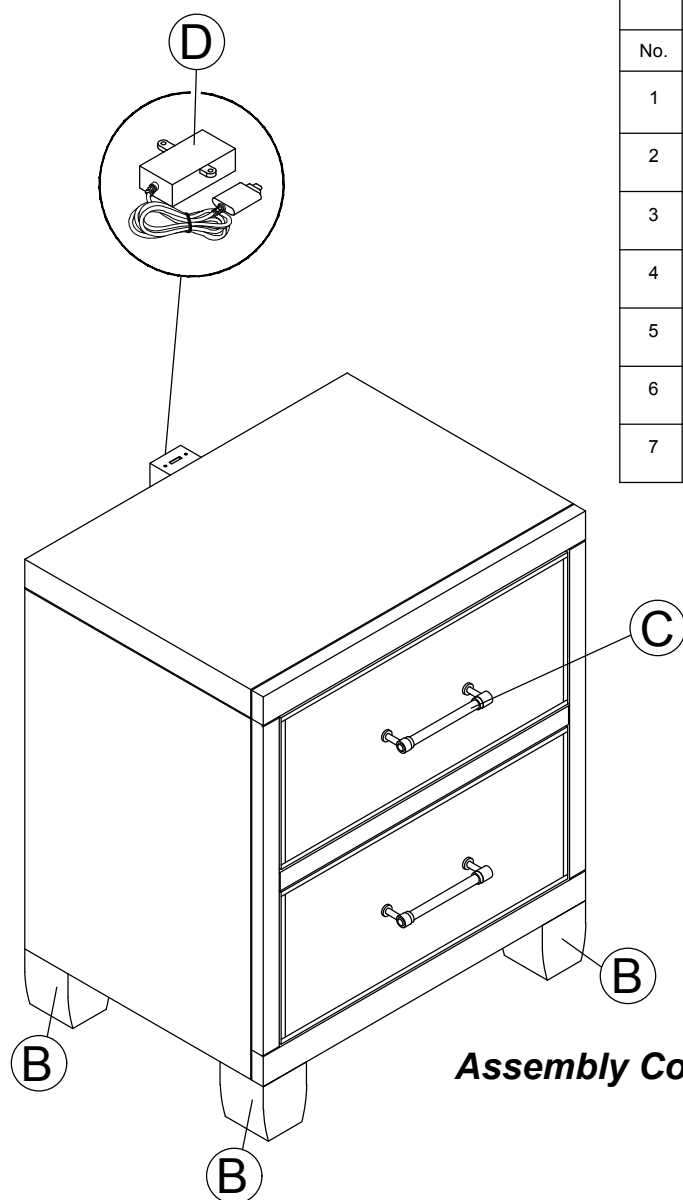


PART LIST

No.	Description	Picture	Q'ty
A	Drawer Nightstand		1
B	Bun Foot		4
C	Handle		2
D	Usb Port		1

HARDWARE LIST

No.	Description	Picture	Q'ty
1	Wood Dowel 10mm x30mm		4
2	JCBC Nylok Bolt M6 x 50mm		4
3	Spring Washer Ø1/4"		4
4	Flat Washer Ø1/4" x 13mm		4
5	L Key M4		1
6	I Key M4		1
7	Tip Restraint Kit		1

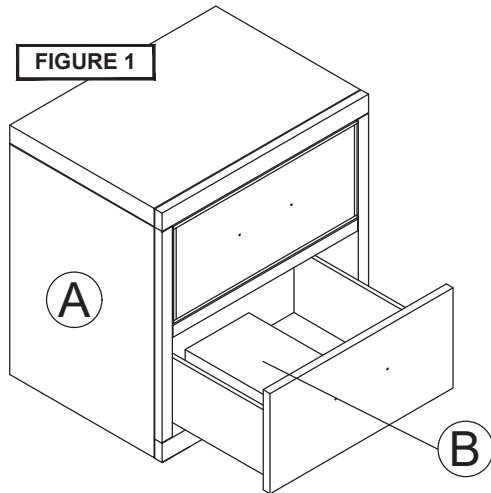


Assembly Complete

ASSEMBLY INSTRUCTION

2293 - 774 NIGHT STAND - SULLIVAN WALNUT

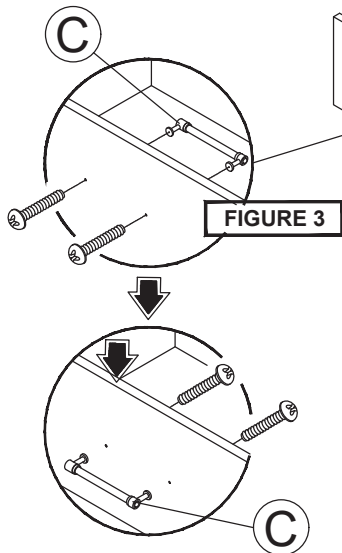
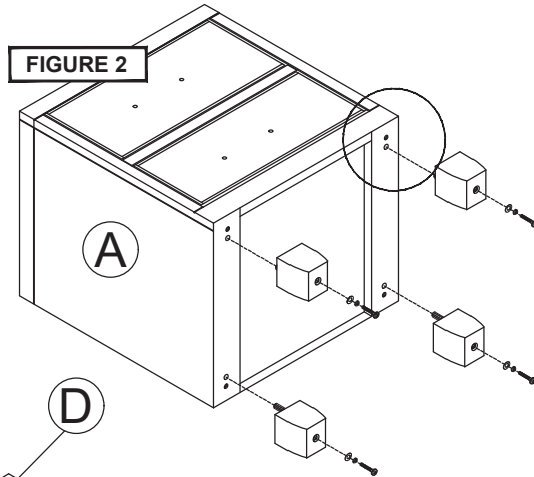
Thank you for purchasing this quality product. Be sure to check all packing material carefully for small parts that may have come loose inside the carton during shipment.



STEP 1 - FIGURE 1
Begin assembly by removing Bun Foot (B) from Drawer in Nightstand (A).

STEP 2 - FIGURE 2

Insert Wood Dowel 10mm x 30mm (1) into each Bun Foot (B). Attach Bun Foot (B) to bottom of Nightstand (A) using JCBC Nylok Bolt M6 x 50mm (2), Spring Washer $\varnothing \frac{1}{4}$ " (3) & Flat Washer $\varnothing \frac{1}{4}$ " x 13mm (4). Tighten using L Key M4 (5) or I Key M4 (6) provided.



STEP 3 - FIGURE 3
Remove Handles (C) from drawers and then turn around and secure from the front. Tighten screws with Philips Screwdriver (not included).

STEP 4 - FIGURE 4
Attach one end of Tip Restraint Kit (7) to wall and the other end to Nightstand (A). The assembly is now complete.

