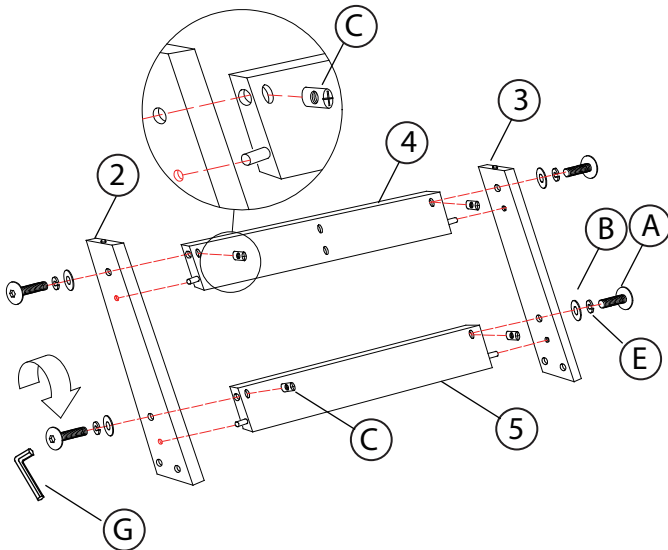


ASSEMBLY INSTRUCTIONS
ITEM NO: MS250CFT
DESCRIPTION: COFFEE TABLE-FOOSBALL

Thank you for purchasing this quality product. Be sure to check all packing material carefully for small parts that may have come loose inside the carton during shipment.

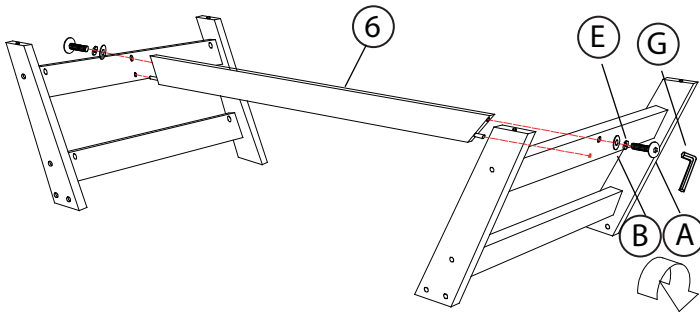
STEP 1

Note: Don't fully tighten all bolts until the end of Step 3.



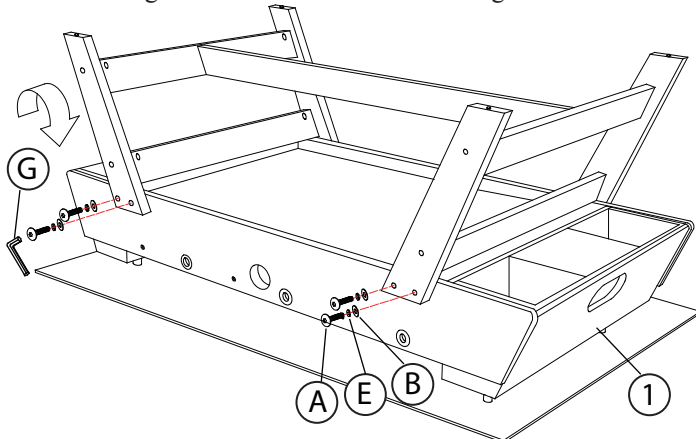
STEP 2

Note: Don't fully tighten all bolts until the end of Step 3.



STEP 3

Note: Tighten the bolts after attach the leg to the table.



PARTS LIST

No.	Description	Sketch	Q'ty
1	Main Frame		1 PC
2	Left Leg		2 PCS
3	Right Leg		2 PCS
4	End Leg Panel - Bottom		2 PCS
5	End Leg Panel - Top		2 PCS
6	Bottom Rail		1 PC
7	3-Player Rod - Silver		6 PCS
8	Foosball		2 PCS
9	Handle		6 PCS

HARDWARE LIST

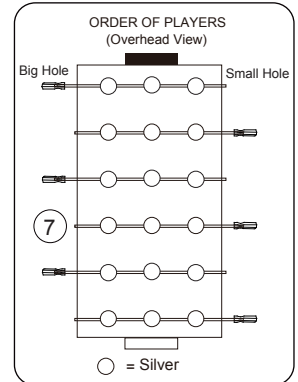
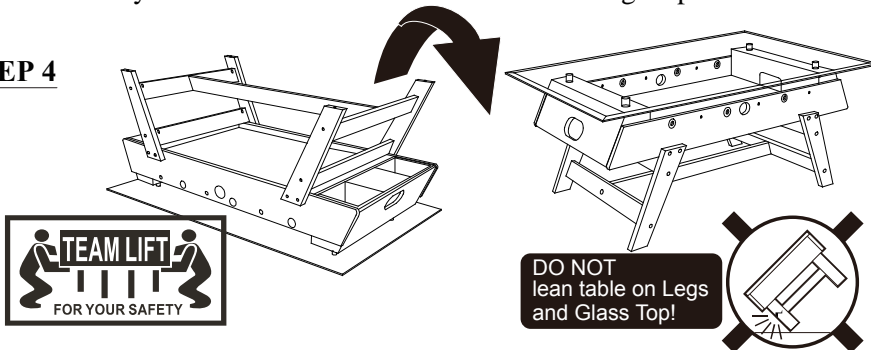
No.	Description	Sketch	Size	Q'ty
A	Bolt		Ø 1/4" x 45mm	18 PCS
B	Washer		Ø1/4" x Ø19mm	18 PCS
C	Barrel Nut		Ø1/4"	8 PCS
D	Rod End Cap		Ø1/4"	6 PCS
E	Spring Washer - Small		Ø1/4"	24 PCS
F	Flat Washer		Ø1/4" x Ø15mm	6 PCS
G	Allen Key		M4	1 PC
H	Wrench		Ø1/4"	1 PC
I	Straight Allen Key		M4x100mm	1 PC

Note: Straight Allen Key(I) is for use with a power drill.

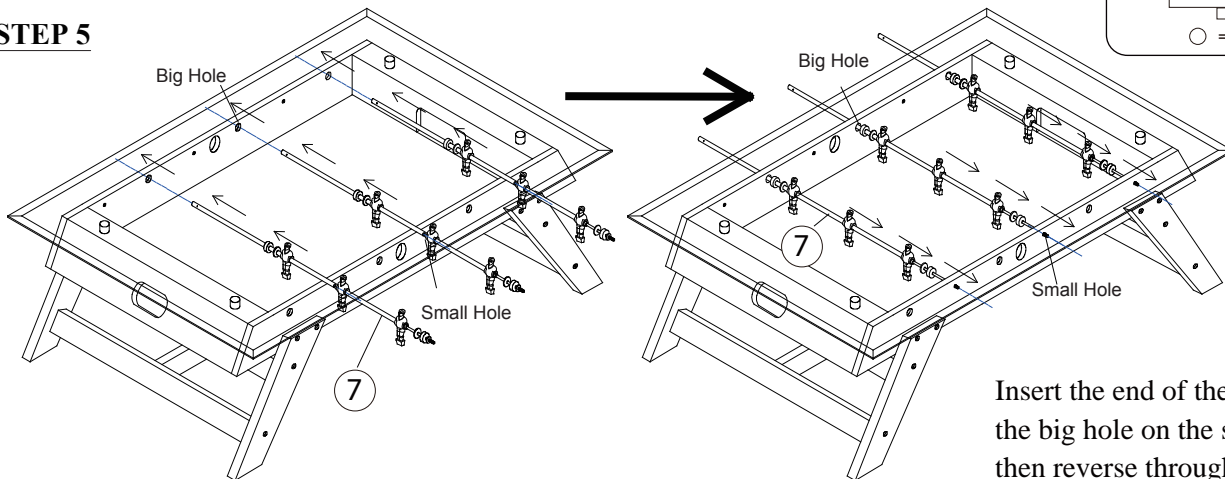
ASSEMBLY INSTRUCTIONS
ITEM NO: MS250CFT
DESCRIPTION: COFFEE TABLE-FOOSBALL

Thank you for purchasing this quality product. Be sure to check all packing material carefully for small parts that may have come loose inside the carton during shipment.

STEP 4

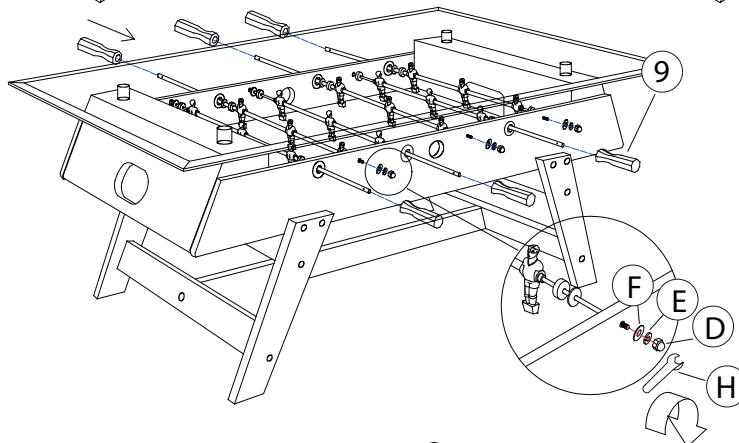


STEP 5

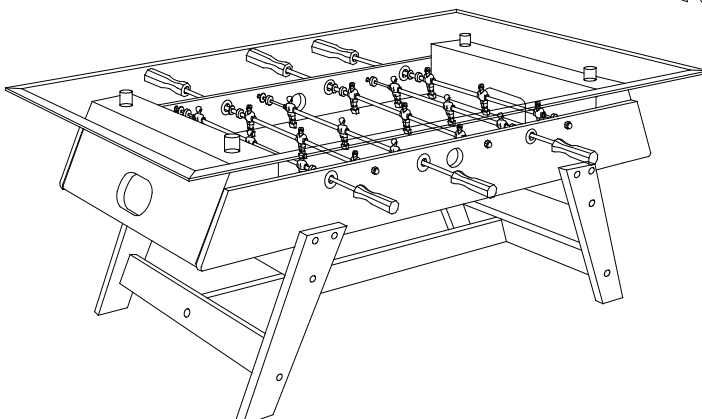


Insert the end of the player rod into the big hole on the side of the table, then reverse through the small hole on the other side of the table. The overhead view will help to locate the correct position. (See Step 5.)

STEP 6



STEP 7



Note:

1. The handles for each color team will be on the same side. Use a mallet to hammer the handle onto the rod if needed.
2. All players should face the opponents goal. Pay attention to the team colors and foot direction.
3. The player rod should spin freely even though the players are not secured in place.

MADE IN CHINA