



ASSEMBLY INSTRUCTIONS

ITEM NO: A634-BR32

DESCRIPTION: 8 DRAWER DRESSER
CHATELET ANTIQUE TAUPE

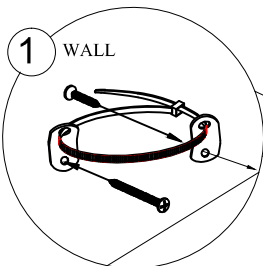
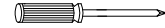
Thank you for purchasing this quality product. Be sure to check all packing material carefully for small parts that may have come loose inside the carton during shipment.

PARTS LIST:

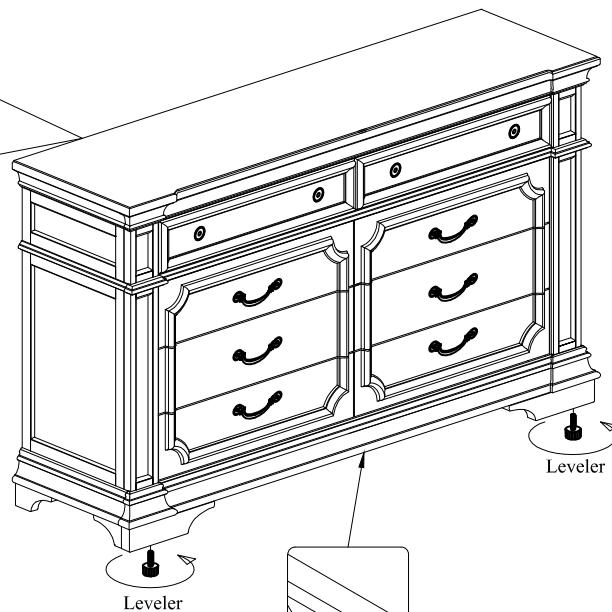
No.	Description	Sketch	Quantity
1	Tipping Restraint		2 Set
2	Leveler		2 Pcs

TOOLS REQUIRED (NOT PROVIDED)

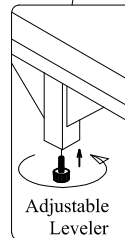
PHILLIPS SCREWDRIVER



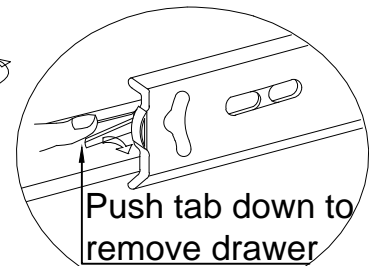
STEP 1



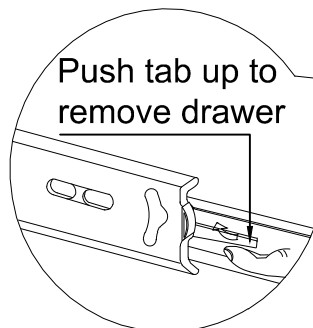
STEP 2



CENTER LEG



Push tab down to remove drawer



Push tab up to remove drawer

To remove drawer, simultaneously pull tab up on one side and push down on the other and remove drawer.