

ASSEMBLY INSTRUCTIONS

ITEM NO: A634-BR61

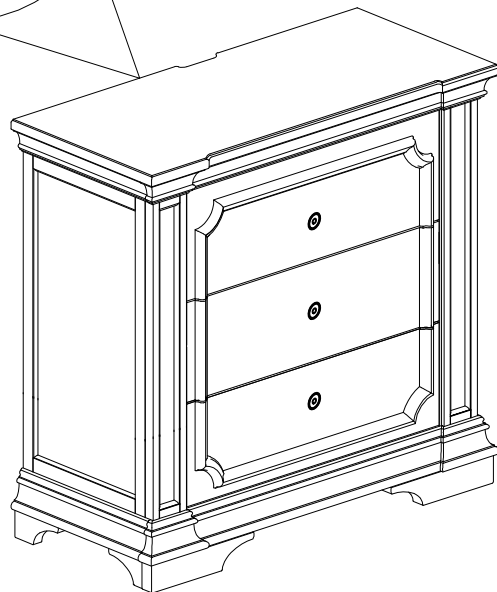
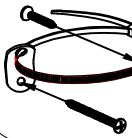
DESCRIPTION: NIGHTSTAND

CHATELET ANTIQUE TAUPE

Thank you for purchasing this quality product. Be sure to check all packing material carefully for small parts that may have come loose inside the carton during shipment.

STEP 1

1 WALL

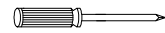


PARTS LIST:

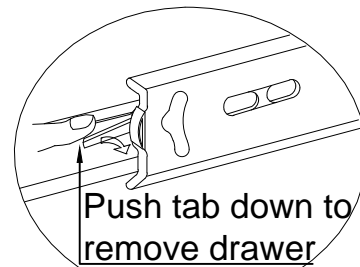
No.	Description	Sketch	Quantity
1	Tipping Restraint		2 Set

TOOLS REQUIRED (NOT PROVIDED)

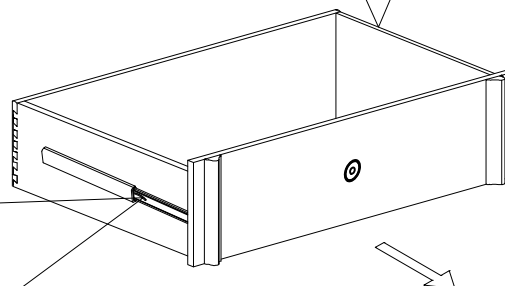
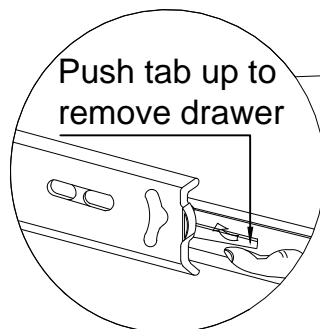
PHILLIPS SCREWDRIVER



Push tab down to
remove drawer



Push tab up to
remove drawer



To remove drawer, simultaneously pull tab up on one side and push down on the other and remove drawer.